

FLINT HILLS MPO

SPRING 2021 NEWSLETTER



Flint Hills Metropolitan Planning Organization

www.flinthillmpo.org
FHMPPO@FlintHillsMPO.org
855.785.3472

CONNECT 2040

Connect 2040, the region's long-range transportation plan, was adopted in December 2020. It is the guiding vision for the future of our transportation system over the next twenty years. *Connect 2040* addresses all modes of transportation (driving, walking, biking, and public transit), building on our current transportation assets and public input to create a realistic plan to achieve our transportation vision and goals.

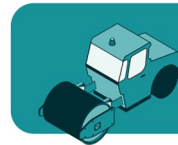
The fiscally-constrained portion of the Plan includes only a handful of projects as most of our region's anticipated revenues will be exhausted on preserving and maintain our existing infrastructure come the year 2040.

The four main goals of *Connect 2040* can be seen to the right. You can learn more about the Plan by visiting the "[Connect 2040](#)" page on our website or viewing the full plan [HERE](#).



SAFETY

Provide a safe and secure multi-modal transportation system.



PRESERVATION

Invest in the preservation and maintenance of our existing transportation infrastructure and assets.



MOBILITY

Maintain system performance and enhance modal choice for the efficient movement of people, goods, and freight.



PROSPERITY

Create an equitable, affordable, sustainable, and integrated transportation system for all users.

JUNCTION CITY PEDESTRIAN PROJECTS



Proposed Project at St. Mary's & Caroline

The MPO was awarded State Transportation Innovation Council (STIC) funding to implement bicycle and pedestrian safety improvements near elementary schools in Junction City. The projects use semi-permanent materials which are inexpensive and easily installed to instantly improve safety. Materials include plastic delineators (posts), rubber curbing, and yield to pedestrian signs. There will be five projects installed in the community this summer.

The local match is being provided by Live Well Geary County's Pathways to a Healthy Community Grant. Learn more about these pedestrian projects [HERE](#).

SAFE ROUTES TO SCHOOL

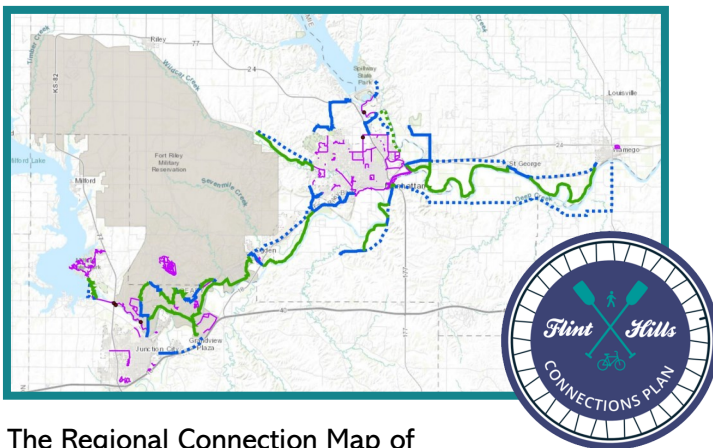
Safe Routes to School (SRTS) is a national program focused on improving the safety of children walking and biking to school. Having a SRTS Plan allows projects to be identified eligible for an earmarked pot of funding through the State.

The MPO will be creating Safe Routes to School (SRTS) Plans for our local communities and school districts throughout 2021. This will include an update of the Manhattan-Ogden USD 383 Plan and inclusion of Oliver Brown Elementary. Plans will be created for St. George Elementary School and several of the elementary schools in Junction City. Learn more about the current SRTS projects [HERE](#).



Above are the five Es of the SRTS program that ensure successful assessment and implementation

CONNECTIONS PLAN



The Regional Connection Map of trails is available on ArcGIS Online [HERE](#).

The *Regional Connections Plan* was adopted by the Policy Board in December 2020. The Plan identifies opportunities to connect communities through a regional trail network. Multi-use paths and trails utilized for walking and biking have become increasingly popular. These facilities allow for people of all ages to have additional opportunities for recreation and transportation, leading to an improved quality of life.

The MPO worked with the cities, counties, community members, and stakeholders to identify an optimal trail network spanning over 72 miles. The full *Regional Connections Plan* is available [HERE](#).

“The Flint Hills MPO provides a regional forum to coordinate, encourage, and promote a safe, efficient, affordable, and integrated transportation system for all users; in support of livable communities and economic competitiveness.”