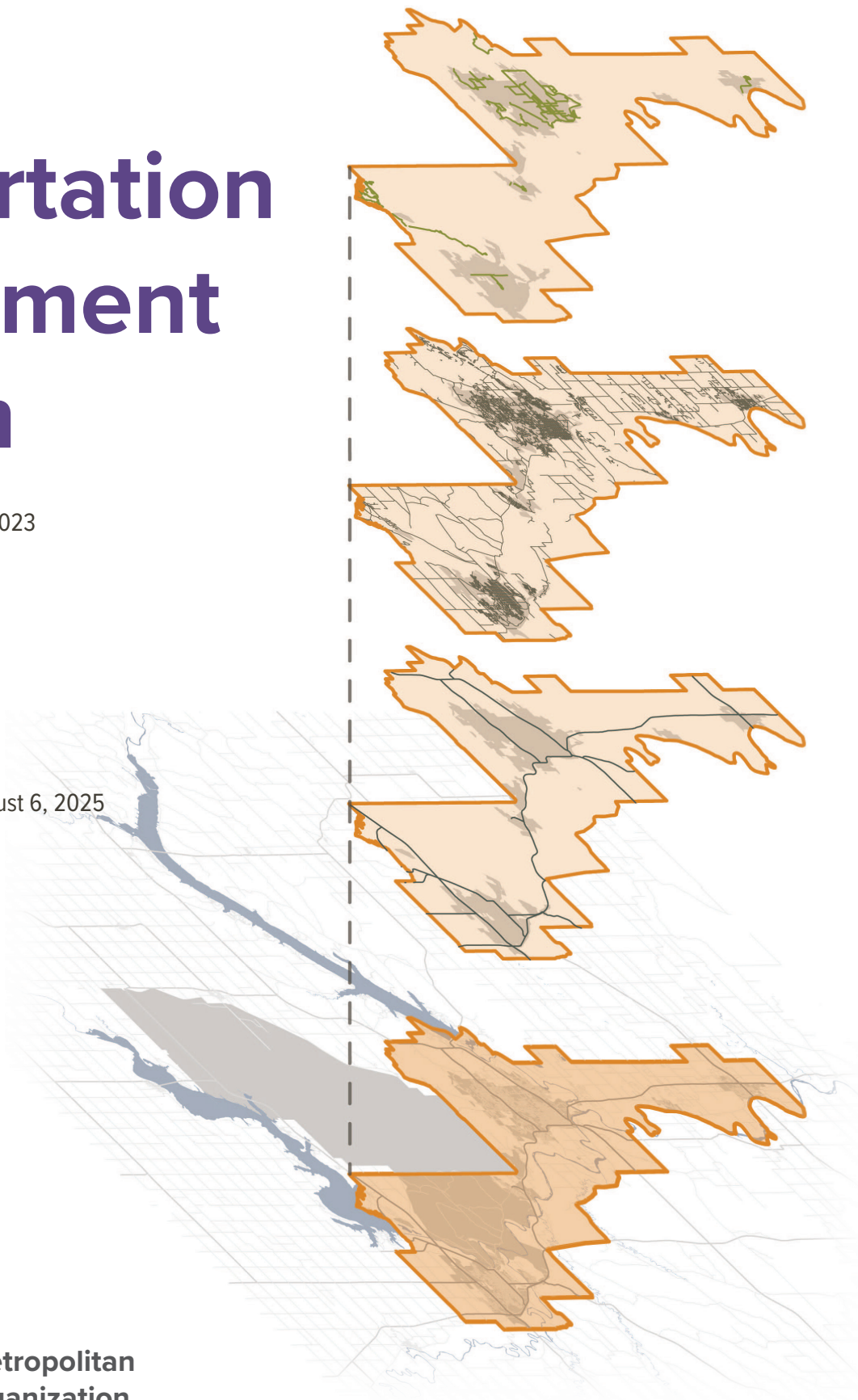


2024-2027

Transportation Improvement Program

Policy Board Approved August 23, 2023
Amended December 20, 2023
Amended March 20, 2024
Amended July 17, 2024
Amended August 21, 2024
Amended December 18, 2024
Amended February 19, 2025
Amended May 5, 2025
Amended June 18, 2025
Administrative Modification #1: August 6, 2025



**Flint Hills Metropolitan
Planning Organization**

206 Southwind Pl. Suite 2B | Manhattan, KS | 66503
Office: 785.620.3070 | Fax: 785.537.6327
FHMPO@FlintHillsMPO.org
www.FlintHillsMPO.org

Title VI Note

The Flint Hills Metropolitan Planning Organization (MPO) hereby gives public notice that it is the policy of the agency to assure full compliance with Title VI of the Civil Rights Act of 1964, the Civil Rights Restoration Act of 1987, Executive Order 12898 on Environmental Justice, and related statutes and regulations in all programs and activities. Title VI requires that no person in the United States of America shall, on the grounds of race, color, sex, or national origin, be excluded from the participation in, be denied the benefits of, or be otherwise subjected to discrimination under any program or activity for which the MPO receives federal financial assistance. Any person who believes they have been aggrieved by an unlawful discriminatory practice under Title VI has a right to file a formal complaint with the MPO. Any such complaint must be in writing and filed with the MPO's Title VI Coordinator within one hundred and eighty (180) days following the date of the alleged discriminatory occurrence. For more information, or to obtain a Title VI Discriminatory Complaint Form, please see our website at www.FlintHillsMPO.org.

Disclaimer

The preparation of this report has been financed in part through funds from the Federal Highway Administration and Federal Transit Administration, U. S. Department of Transportation, under the Metropolitan Planning Program, Section 104(f) of Title 23, U.S. Code. The contents of this report do not necessarily reflect the official views or policy of the U.S. Department of Transportation.

Table of Contents

Introduction	1
WHAT IS THE TIP?	1
WHAT IS THE MPO?	1
TIP Procedures	2
PROCESS FOR INCLUDING PROJECTS IN THE TIP	2
TIP AMENDMENTS	2
ADMINISTRATIVE MODIFICATIONS	2
Fiscal Analysis	3
PROJECT FUNDING.....	3
<i>Federal Funding Sources</i>	3
<i>State Funds</i>	3
<i>Local Funds</i>	4
<i>Advance Construction</i>	4
<i>Operations and Maintenance (O&M)</i>	4
DEMONSTRATION OF FISCAL CONSTRAINT	5
Major Projects	5
<i>Roadways Projects (including intersections and bridges)</i>	5
<i>Bikeway and Pedestrian Projects</i>	5
<i>Transit Facilities and Service Projects</i>	5
<i>Significant Delay</i>	6
MAJOR PROJECTS IMPLEMENTED.....	ERROR! BOOKMARK NOT DEFINED.
PROJECTS SIGNIFICANTLY DELAYED.....	7
Breakdown of Funding by Project Type	8
MISSION AND GOALS.....	8
Performance Management and Targets	9
Appendix A: Funding Summary Table	A-1
Appendix B: TIP Project Listing Information	B-1
Appendix C: Summary of Changes	C-1
Appendix D: Project Maps	D-2
Appendix E: Project Listing	E-1
Appendix F: MPO Self-Certification	F-1
Appendix G: Public Comment Period Summary	G-1

List of Figures

Figure 1: Flint Hills MPO Planning Boundary.....	1
--	---

List of Tables

Table 1: Local Revenue Sources.....	4
Table 2: Funding Amount by Project Type	8
Table 3: Projects and related Performance Measure.....	9

Introduction

What is the TIP?

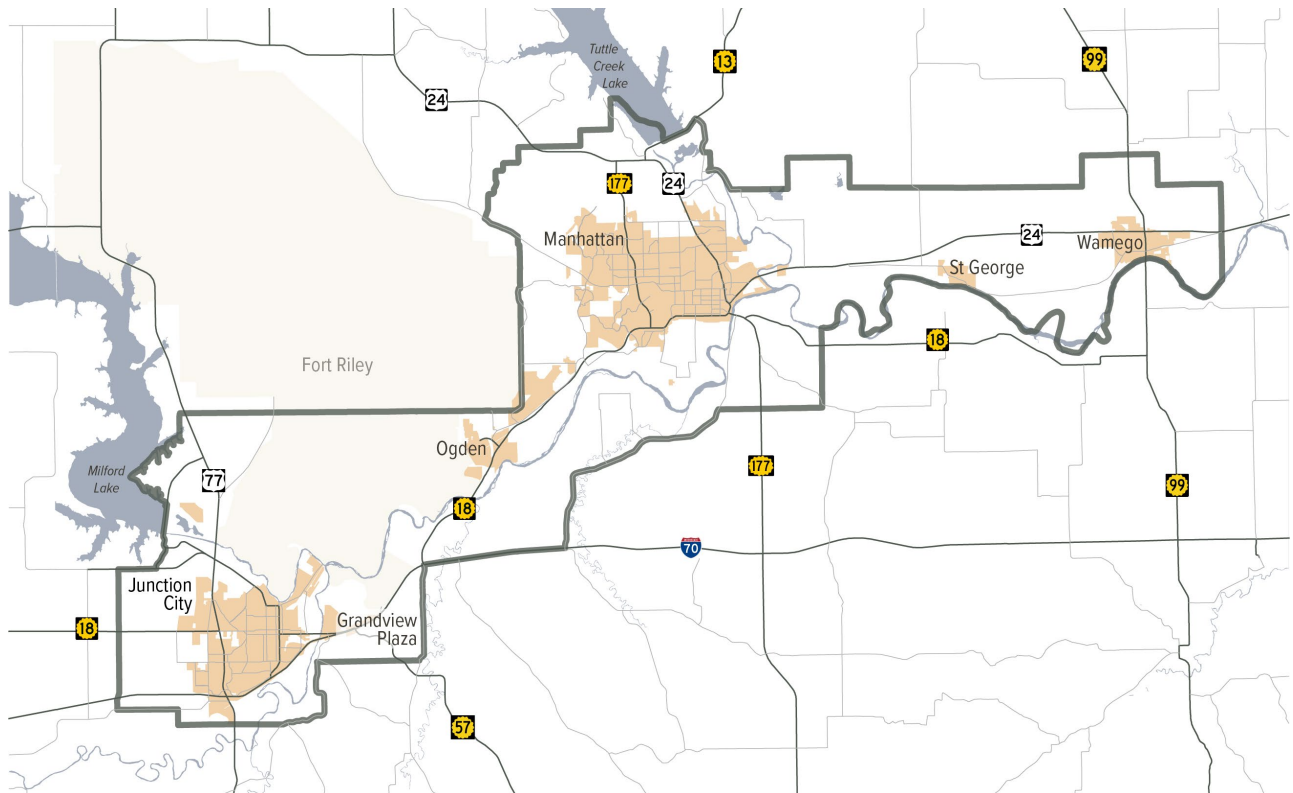
The Transportation Improvement Program (TIP) is a federally required document and one of many tools used to implement the vision and goals of the long-range transportation plan. The TIP contains all federally funded and/or regionally significant, multimodal, surface transportation projects that are to be implemented in the MPO area during the next four years. The TIP can only contain projects with a committed funding source.

What is the MPO?

The Flint Hills Metropolitan Planning Organization (MPO) is the designated MPO for the Manhattan, Kansas Urbanized Area. The MPO serves a three-county area; consisting of six cities (the Cities of Manhattan, Junction City, Wamego, Ogden, St. George, and Grandview Plaza), portions of three counties (Riley, Pottawatomie, and Geary Counties), and the southern portion of Fort Riley Military Installation.

The MPO is governed by a Policy Board, comprised of local elected officials, and representatives from the Kansas Department of Transportation (KDOT), the Federal Highway Administration (FHWA), and the Federal Transit Administration (FTA).

Figure 1: Flint Hills MPO Planning Boundary



TIP Procedures

Process for Including Projects in the TIP

MPO staff will notify project sponsors of opportunities to make additions or changes to the TIP every couple of months. If a project sponsor needs a project added or changed prior to the scheduled TIP amendment, the project sponsor should contact MPO staff.

After MPO staff updates the TIP to include all changes, the document is released for public comment, per the requirements outlined in the [Public Participation Plan](#). If public comments are submitted, MPO staff will present the comments to the Technical Advisory Committee (TAC) for consideration. If changes are made to the draft document, the TIP may have to be advertised for public comment again.

After the public comment period, and any comments are addressed, the draft TIP is reviewed by the TAC and a recommended action is submitted to the Policy Board. The Policy Board then has an opportunity to review the document. After Policy Board approval, the TIP is sent to the Kansas Department of Transportation (KDOT) for approval. Projects in the metropolitan areas' TIPs are included by reference in the Statewide Transportation Improvement Program (STIP), which is the State's equivalent of a state-wide TIP. KDOT sends the STIP to Federal Highway Administration (FHWA) and Federal Transit Administration (FTA) for approval. Approval of the STIP by FHWA and FTA also serves as TIP approval.

TIP Amendments

Amendments to the TIP are processed once every quarter, if needed. Prior to each quarterly amendment, a notice will be sent out to all project sponsors notifying them of the upcoming amendment. The project sponsors will have the opportunity to add, remove, or change a project. The amendment approval process will then follow the same procedures as described in the section above.

Whenever there is an amendment to the TIP, a summary of changes will be provided to highlight the modifications made to the project listing. Detailed procedures for the TIP amendment process and the associated public involvement process for the TIP amendments are outlined in the Public Participation Plan (PPP).

Administrative Modifications

Administrative Modifications are minor revisions to the TIP that do not require public review and comment, or approval from KDOT, FHWA, nor FTA. Revisions that meet any of the following criteria are considered Administrative Modifications:

- Revise a project description without changing the project scope;
- Revise the funding amount listed for projects or project phases at or below the Amendment threshold. Additional funding not requiring an Amendment is limited up to 25% of the total project cost or \$5 million (whichever is less), based on the amount programmed in the original approved TIP;

- Decrease project cost;
- Change in source of federal funds;
- Conversion of state funds to federal funds for projects programmed previously as Advanced Construction;
- Change program year of project within the four-year TIP; or
- Split or combine individually listed projects, provided the cost, schedule, and scope remain unchanged.

Fiscal Analysis

Project Funding

Projects in the TIP are funded through various sources of Federal, State, and local funds. Regardless of the funding source, the TIP must be able to demonstrate fiscal constraint. This means there must be adequate local, State, and Federal funds available, or can reasonably be expected to become available, to pay for all projects listed in the TIP.

Fiscal constraint:

Project costs do not exceed anticipated revenues and the region can fund all projects identified in the TIP.

Federal Funding Sources

With the December of 2021 enactment of the Infrastructure Investment and Jobs Act (IIJA), formerly known as BIL (Bipartisan Infrastructure Law), federal funding for transportation was increased and stabilized for fiscal years 2022 through 2026. IIJA funds will be distributed across all sectors of transportation through existing and new programs and grants.

The Surface Transportation Program (STP) funds are distributed to every county in Kansas, as well as to cities with more than 50,000 people in the Census defined Urbanized Area. It should be noted that not all STP funds received by the counties are attributable to projects within the MPO boundary. All three counties have areas outside of the MPO and may elect to use STP funds on projects in those locations.

In addition to STP, there are also several opportunities to apply for other Federal funds; including, Transportation Alternatives (TA), Highway Safety Improvement Program (HSIP), and National Highway Performance Program (NHPP) funds.

Federal funding for transit and paratransit operations will generally be derived from transit urban and rural formula programs from FTA, such as; 5307, 5310 and 5311 funds. These funds are used for capital and operational expenses.

State Funds

The Kansas Department of Transportation (KDOT) is by far the largest financial investor in the MPO region's transportation system. The level of KDOT funding expended in the region varies greatly from year-to-year based on the number of projects, the scope of projects, and award of competitive funding (i.e. Geometric Improvement, City Connecting Link Improvement Program (CCLIP), High Risk Rural Road, etc.). More recently, the State passed a new transportation program, The Eisenhower Legacy

Transportation Program, called IKE. The IKE Program introduced several new funding opportunities available to the local jurisdictions.

Local Funds

Transportation investments are typically identified in the City or County’s Capital Improvements Program (CIP) for the upcoming fiscal year (except for Geary County, which does not have a formal CIP). The following sources are dedicated to transportation investments for each jurisdiction.

Table 1: Local Revenue Sources

Jurisdiction	Source of Revenue	Average Amount/Year
City of Manhattan	*1/2 cent Sales Tax (70% earmarked for city debt & costs related to public infrastructure)	\$200,000
	1/4** cent Sales Tax for roadway preservation and SRTS	\$2.375 million/year \$118,000 for SRTS
Geary County	***Mill Levy (1 mill is typically set aside for transportation each year, but not a guarantee)	\$255,000
Riley County	^ 1/5 cent Sales Tax (100% earmarked for Roads and Bridges)	\$1,600,000
Pottawatomie County	^^ Special Highway Fund (Any remaining balance from Road & Bridge Fund at end of year is transferred to Special Highway Fund)	\$1,100,000

* New sales tax beginning Jan. 2023, transportation funds not specified. Funds based on past years

** Average between 2017-2021

*** Average between 2020-2022

^ New sales tax beginning Jan 2023, forecasted funds

^^ Average between 2018-2022

Advance Construction

The State uses a practice known as Advance Construction (AC) to maximize the State’s ability to utilize Federal funds while still completing projects in a timely manner. AC allows the State to begin a project in one Federal Fiscal Year (FFY) using State funds, and then be reimbursed for eligible project costs with Federal funds in a later FFY. Once Federal funds are available, the State can be reimbursed with Federal funds. The fiscal year that the State is reimbursed with Federal funds is referred to as the “conversion year”. Projects using AC must be identified as doing so, along with the anticipated year of conversion.

Operations and Maintenance (O&M)

Operation and maintenance (O&M) activities are necessary to ensure the safety and efficiency of the existing transportation system. This consists of routine activities such as pothole patching, minor repairs to pavement and curbs, snow removal, striping and marking, mowing, signal repairs, sign replacement, and other minor work tasks. The expense related to this type of work is usually paid for by the local entities that own and operate the roadway. KDOT is responsible for maintaining the major highways running throughout the region.

Demonstration of Fiscal Constraint

Federal regulation requires that the first four years of the TIP be financially constrained. The Funding Summary Table, in **Appendix A**, provides realistic costs and funding estimates for TIP projects.

KDOT projects are considered financially constrained when submitted to the MPO staff for inclusion in the TIP, given the process the state undertakes when identifying statewide projects. The locals are asked to document fiscal constraint when submitting a new project for inclusion in the TIP or increasing the cost of an existing project if it exceeds the revenue estimate outlined in *Connect 2040*, the long-range transportation plan.

Major Projects

As per federal regulation, MPOs must list any major projects implemented from the previous TIP and identify any projects that experienced significant delays. The following provides a definition of each of the terms:

Roadways Projects (including intersections and bridges)

The major roadway projects implemented from the previous TIP will include projects located on roadways classified by the MPO as a collector or higher, with construction costs of at least \$2.0 million and that have at least one of the following attributes:

- Increased roadway capacity or decreased traffic congestion
- Significantly improved safety
- Replaced aging infrastructure or improved to current standards
- Resulted in significant delay and/or detour

Bikeway and Pedestrian Projects

The major bikeway and pedestrian projects implemented from the previous TIP will include projects that meet at least one of the following:

- Total project cost of at least \$500,000
- Construction of new bikeway or pedestrian facility (or extension of existing facility) into a location where a bicycle/pedestrian facility did not exist before

Transit Facilities and Service Projects

The major transit projects implemented from the previous TIP will include projects that have a total project cost of at least \$1.0 million and meet at least one of the following criteria:

- Acquisition of three or more new transit vehicles
- Addition of new operations and/or maintenance buildings or expansion of existing buildings
- Initiation of new transit service or expansion of existing transit services into territory not previously served by transit

Significant Delay

The MPO defines significant delay as a project that has experienced a delay by two or more years from the year it was initially programmed in the TIP for construction.

Major Projects Implemented

Using the definitions listed above, the following is a list of major projects that were implemented from the 2018-2021 TIP. This includes roadway, bikeway and pedestrian, and transit service projects.

Project #	Project Name	Scope	Construction Year	Total Cost (in 1000s)	Comments
1-03-2022	Green Valley Road: US-24 to Eagles Landing	10' multiuse path along Green Valley Road, including bike/ped accommodations along bridge	2022	\$ 704.3	Under Construction
x-04-2014	US-77 Reconstruction from S of Old Milford Rd to N Jct K-57	Reconstruct US-77 to a 2-Lane on 4-Lane ROW. Realignment of Old Milford Rd, Quarry Rd, Rifle Range Rd, and the connection with Old US-77.	2014	\$ 15,033.6	Constructed
x-06-2022	US-24 Overlay Widen Shoulder Project in PT Cty	Mille and overlay including the widening of shoulders from 3 to 6 feet	2023	\$ 2,311.0	Under Construction
x-10-2020	K-18 heavy preservation near K-177	Pavement replacement	2022	\$ 3,180.0	Under Construction
x-12-2022	Kimball Ave Roundabout Replacement	Replace roundabout, sidewalk improvements, pavement rehab	2022	\$ 3,300.0	Under Construction
x-13-2022	Patching on I-70 east of K-57	Patching and resealing joints	2022	\$ 4,527.0	Under Construction
x-16-2020	Junction City 7th Street Bicycle Boulevard	Pedestrian and Bicycle improvements	2020	\$ 862.4	Constructed
x-20-2020	Bridge Replacement on US-24 over Blackjack Creek	Replace bridge	2022	\$ 2,575.0	Constructed
x-24-2020	Kimball Ave: College to Denison (NCC Phase IX) Cost Share	Widening the existing 4-lane to 5-lane with paved median for access control and dedicated left turn lane. New traffic signal installed at Kimball/Grain Science entrance. 1/2 mile of new bikeway	2020	\$ 6,440.5	Under Construction
x-32-2014	US-40B Bridge Replacement (UP Railroad and Monroe St)	Bridge replacement, to include 5' sidewalk on both sides	2014	\$ 18,691.9	Under Construction
x-T3-2022	FHATA Urban Bus Capital Program	Purchase of 5, 20-passenger buses and two low-floor buses	2022	\$ 1,926.9	Purchased

Projects Significantly Delayed

Project #	Project Name	Scope	Initial Construction Cost (in 1000s)	Current Construction Cost (in 1000s)	Original FFY for Construction	Updated FFY for Construction	Comments
x-T12-2018	FHATA Capital Improvements	Purchase of admin vehicle, maintenance vehicle, 4-post lift	\$ 214.6	\$ 109.3	2019	2024	Programmed in 2024 TIP

Breakdown of Funding by Project Type

The projects included in the TIP are grouped into one of eight categories based on project type. Below are the categories as well as a brief description of each.

Roadway Expansion: Increasing capacity of the roadway by adding travel lanes;

Roadway Preservation: Maintaining the existing roadways and bridges (mill and overlay, brick street rehabilitation, resurfacing, etc);

Modernization: Improving an existing roadway to make it more functional or accommodate other modes of transportation

Safety/Intersection: Projects that improve the safety of intersections and roadways, including geometric improvement projects, restriping, rumble strips, adding turn lanes or shoulders, etc.;

Bicycle/Pedestrian: Projects adding or improving bicycle or pedestrian infrastructure and accommodations, including multi-use paths, bike lanes, pedestrian signals, etc.;

Transit: Paratransit and transit activities (operating and capital purchases);

Planning/PE: Studies or professional engineering programmed for a project; and

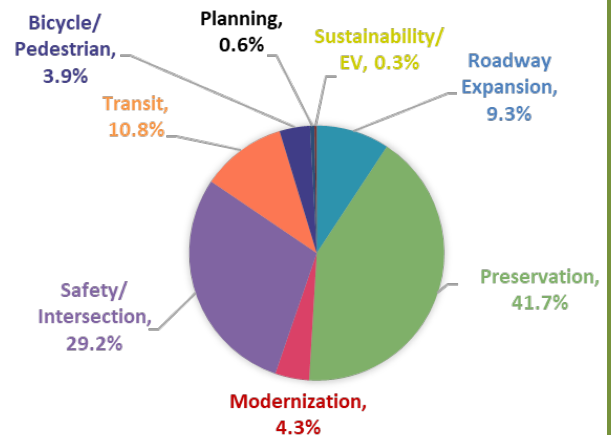
Sustainability/EV: Projects that install electric vehicle (EV) chargers or infrastructure, or other sustainable projects including carbon reduction and green infrastructure.

The “Funding Amount” shown in **Table 2** takes into account the total project cost from all years and phases of the projects included in **Appendix E** even those outside of the TIP timeframe.

Table 2: Funding Amount by Project Type

Project Type	Funding Amount*	Percentage of Total
Roadway Expansion	\$ 16,797.9	9.3%
Preservation	\$ 75,393.5	41.7%
Modernization	\$ 7,820.3	4.3%
Safety/ Intersection	\$ 52,847.9	29.2%
Transit	\$ 19,564.0	10.8%
Bicycle/ Pedestrian	\$ 6,991.0	3.9%
Planning	\$ 1,025.0	0.6%
Sustainability/EV	\$ 511.4	0.3%
Total	\$ 180,951.0	100.0%

Note: Includes all years and phases of projects, reflected in x1000.



Mission and Goals

The mission of the Flint Hills MPO is to “Provide a regional forum to coordinate, encourage, and promote a safe, efficient, affordable, and integrated transportation system for all users; in support of livable communities and economic competitiveness.” To accomplish this, the MPO established four goals within the long-range plan, which serve as the foundation for the transportation planning process and project selection.



SAFETY

Provide a safe and secure multi-modal transportation system.



MOBILITY

Maintain system performance and enhance modal choice for the efficient movement of people, goods, and freight.



PRESERVATION

Invest in the preservation and maintenance of our existing transportation infrastructure and assets.



PROSPERITY

Create an equitable, affordable, sustainable, and integrated transportation system for all users.

Performance Management and Targets

To track the progress being made on achieving the goals outlined above, performance measures (PMs) and targets have been developed. The PMs and targets are housed in the [Metrics for Progress](#) document. The tables below identify the projects contained within the TIP that will help to maintain or meet our target for various performance measures.

Table 3: Projects and related Performance Measure

TIP Project #	C2040 ID	Project	Goal	PM #
01-2022		Blue Jay Trail	Mobility	PM6
01-2024		Old Milford Road Bridge Replacement	Preservation	PM7, PM8
03-2024		US-24 & Excel Road Intersection Improvements	Safety	PM3, PM4
06-2024	P11	I-70 in Geary County Guardrail Updates	Preservation	PM1, PM2
07-2024		Wamego: Pavement Restoration on K-99	Preservation	PM1, PM2
08-2022	E69	Intersection of Kimball and Denison	Safety	PM1, PM2
			Mobility	PM4
08-2024	P13		Safety	PM3, PM4, PM5
09-2022	E08	Casement Road Improvements: Brookmont to Allen/Knox	Safety	PM3, PM4
			Mobility	PM4
09-2024		Casement & Hayes Intersection	Safety	PM1 - PM5
10-2020		K-18 heave preservation near K-177	Preservation	PM3
10-2022	M40	N. Manhattan Ave Traffic Signals and two-way bike lane	Safety	PM5, PM6
			Mobility	PM4, PM6
			Prosperity	PM4, PM5
11-2022		Hayes Dr Trail	Mobility	PM6
12-2022	M26	Kimball Ave Roundabout Replacement	Safety	PM3
13-2022		Patching on I-70 east of K-57	Preservation	PM1, PM2

TIP Project #	C2040 ID	Project	Goal	PM #
13-2024		6th & Washington St ITS Corridor	Mobility	PM4
14-2022		US-24 & Levee Drive Intersection Improvements	Safety	PM1, PM2, PM3, PM4
14a-2020	M20	Roundabout at US-24 & K-13	Safety	PM1, PM2, PM3, PM4
14b-2020	M21	Roundabout at US-24 & K-113	Safety	PM1, PM2, PM3, PM4
15-2022	P12	I-70 Bridge Replacement at J. Hill Road	Preservation	PM5, PM6
17-2020		Juliette Ave - Phase IV	Prosperity	PM3, PM4
17-2022	E61	I-70 & Taylor Road Interchange	Preservation	PM5, PM6
17-2024		K-99 Pavement Restoration from 8th St to US-24	Preservation	PM3, PM4
18-2022		Repair Bridge #037 on US-40B3 in Geary County	Preservation	PM7
18-2024	M66	Junction City McFarland Roundabout	Safety	PM5, PM6
19-2022	P10	Repair Bridge #017 on I-70 in Geary County	Preservation	PM5, PM6
19-2024		US-24 Signing in Pottawatomie County	Safety	PM1, PM2, PM3, PM4
20-2024		US-24 Corridor Management Plan	Preservation	PM3, PM4, PM7, PM8
21-2024		Milling & overlay on US-77 in GE County	Preservation	PM3, PM4
22-2024		Milling & overlay on K-113 in RL County	Preservation	PM3, PM4
24-2020	E37	Kimball Ave: College to Denison (NCC Phase IX) Cost Share	Mobility Prosperity	PM6 PM4
24-2022		Increasing the Walkability/Bikeability of St. George	Mobility	PM6
25-2020	M15	I-70 & K-18 Interchange	Safety Preservation	PM3, PM4 PM5
27-2020	P10 P11	I-70 Pavement Replacement	Preservation	PM1, PM2
T3-2024		5th & Leavenworth Stop Improvements	Prosperity	PM1, PM3, PM4
T10-2020	M25	Fremont Roadway and Bus Stop Improvements	Prosperity Mobility	PM1, PM3, PM4 PM6
T7-2020		600 Block of Poyntz Bus Stop Improvements	Prosperity	PM1, PM3, PM4

Goals and Performance Measures

Safety

- PM 1: # of vehicular fatalities
- PM 2: Rate of vehicular fatalities per 100 million vehicle
- PM 3: # of serious injuries
- PM 4: Rate of serious injuries per 100 million vehicle
- PM 5: Non-Motorized Fatalities & Serious Injuries
- PM 6: % of serious injuries & fatality crashes involving bicycles & pedestrians

Preservation

- PM 1: % of Interstate pavement in good condition
- PM 2: % of Interstate pavement in poor condition
- PM 3: % of non-Interstate pavement in good condition
- PM 4: % of non-Interstate pavement in poor condition
- PM 5: % of NHS bridges in good condition
- PM 6: % of NHS bridges in poor condition
- PM 7: % of non-NHS bridges in good condition
- PM 8: % of non-NHS bridges in poor condition

Mobility

- PM 1: % of person-miles traveled on Interstate with reliable travel time
- PM 2: % of person-miles traveled on the NHS with a reliable travel time
- PM 3: Truck Travel Time Reliability (TTTR) Index on our Interstate system
- PM 4: % of Intelligent Transportation System traffic signals on key corridors
- PM 6: % of planned bicycle infrastructure projects implemented

Prosperity

- PM 4: % of bicycle infrastructure located in EJ areas
- PM 5: Maintain or reduce the number of roadway feet per person

Appendix A: Funding Summary Table

Funding Source of Programmed Projects (in thousands)						
Funding Source	FFY 2024	FFY 2025	FFY 2026	FFY 2027	Total	
Federal	NHPP	\$ 4,073.5	\$ 39,440.0	\$ 1,447.0	\$ 12,383.8	\$ 57,344.3
	STP	\$ -	\$ -	\$ -	\$ -	\$ -
	TA	\$ -	\$ 4,764.0	\$ -	\$ -	\$ 4,764.0
	HSIP	\$ 10,505.0	\$ -	\$ -	\$ 513.5	\$ 11,018.5
	BRF	\$ -	\$ 888.3	\$ -	\$ -	\$ 888.3
	FRP	\$ -	\$ -	\$ -	\$ -	\$ -
	THUD	\$ -	\$ 385.1	\$ -	\$ -	\$ 385.1
	CRP	\$ -	\$ 602.1	\$ 1,721.1	\$ -	\$ 2,323.2
	FTA 5307	\$ 2,775.8	\$ 1,901.0	\$ 1,564.8	\$ -	\$ 6,241.6
	FTA 5307 ARA	\$ 372.0	\$ -	\$ -	\$ -	\$ 372.0
	FTA 5310	\$ 156.0	\$ -	\$ -	\$ -	\$ 156.0
	FTA 5311	\$ 668.0	\$ 590.6	\$ -	\$ -	\$ 1,258.6
	FTA 5339	\$ 197.3	\$ 48.7	\$ -	\$ -	\$ 246.0
	AIC	\$ 800.0	\$ -	\$ -	\$ -	\$ 800.0
	ARPA	\$ -	\$ 2,700.0	\$ -	\$ -	\$ 2,700.0
	TOTAL	\$ 19,547.6	\$ 51,319.8	\$ 4,732.9	\$ 12,897.3	\$ 88,497.6
State	\$ 1,865.9	\$ (8,004.7)	\$ (894.7)	\$ (12,383.8)	\$ (19,417.3)	
Local	\$ 25,942.9	\$ 13,934.9	\$ 956.3	\$ 114.7	\$ 40,948.8	
Total	\$ 47,356.4	\$ 57,249.9	\$ 4,794.5	\$ 628.2	\$ 110,029.0	

HSIP-Highway Safety Improvement Program

STP-Surface Transportation Program

NHPP-National Highway Performance Program

TA-Transportation Alternatives

5307 ARA - American Recovery Act

BRF-Bridge Funding

THUD - Transportation, Housing, & Urban Development

CRP - Carbon Reduction Program (TERS)

FRP - Freight Program

Note: FTA transit funds in the MPO region are typically only programmed for the current year of the TIP due to unknown funding amounts in future years (except for 5307 funds).

Note: Any negative balance shown for state funding is due to state funds being credited back once a project was converted to federal funds.

Anticipated Funding (in thousands)					
Funding Source	FFY 2024	FFY 2025	FFY 2026	FFY 2027	Total
Federal	\$ 19,547.6	\$ 51,319.8	\$ 6,490.4	\$ 6,490.4	\$ 83,848.1
State	\$ 1,865.9	\$ 6,529.3	\$ 6,529.3	\$ 6,529.3	\$ 21,453.9
Local*	\$ 16,190.2	\$ 7,590.2	\$ 7,590.2	\$ 7,590.2	\$ 38,960.7
Total	\$ 37,603.7	\$ 65,439.3	\$ 20,609.9	\$ 20,609.9	\$ 144,262.7

* Anticipated Funding is calculated using the estimates from *Connect 2040*. The amount of funding available in the 2020-2025 time band was used and then a yearly average was calculated. Manhattan has programmed \$8.6 million in additional local sources like K-State Athletics, City-University Fund, K-State General Fund, and bonding.

Appendix B: TIP Project Listing Information

The projects listed in the TIP are broken down into four categories: Road and Bridge; Bicycle and Pedestrian; Transit and Paratransit; and Railroad. Below is a sample project from the TIP to aid in explaining each field of the form.

Connect2040 Plan #

KDOT Reference #

FHMPO Reference #
(see note below)

Agency responsible for Project

Calendar year in which the project phase will be obligated

Phase:
PE - Preliminary Engineering
ROW - Right-of-Way
UTIL – Utilities
CONST – Construction (including Construction Engineering)

Advanced Construction Status

Federal Funding Source

FFY	Phase	Fed	State	Local	Total	Source	AC
2021	PE		1,607.8		1,607.8		x
2023	ROW		482.3		482.3		
2023	UTIL		482.3		482.3		x
2024	CONST		17,284.0		17,284.0		x
2028	PE	1,447.0	(1,447.0)		-	Conv-NHPP	
2028	UTIL	434.1	(434.1)		-	Conv-NHPP	
2028	CONST	15,555.6	(15,555.6)		-	Conv-NHPP	
		17,436.7	2,419.8	-	19,856.5		

TIP # 1-25-2020

KDOT # KA-6018-01

C2040 # M15

Project Type Safety

Length 2.2 mi

Project Sponsor KDOT

Project Name I-70 and K-18 Interchange

Location: I-70 and K-18 Interchange

Description Install new EB auxiliary lane from Henry Gate to Exit 313.
Install fly over ramp from EB I-70 to NB K-18. Alter turn ramp from SB K-18 to WB I-70

TIP Entered 2020 - A5

Bike-Ped No

TIP Last Revised 2024 - Original

ITS No

Does the project have Bike-Ped infrastructure

Intelligent Traffic System

Connect 2040 Goal Safety Performance Measures PM3, PM4

Preservation PM5

USDOT Performance Measures, aligned under Connect 2040 Goals

Goals as defined in Connect 2040 (LRTP)

Total Project Cost

Decoding the TIP

- X-XX-202X** The first digit identifies the most recent amendment to the make changes to the project. A "0" means the project has not been modified since the original TIP document. Now also found in "TIP Entered" & "TIP Last Revised" sections.

X-XX-202X The second set of digits is the project number. This number never changes.

X-XX-202X The last set of digits indicates the year the project was first programmed in the TIP. The TIP is updated in even years (i.e. 2020, 2022, 2024).

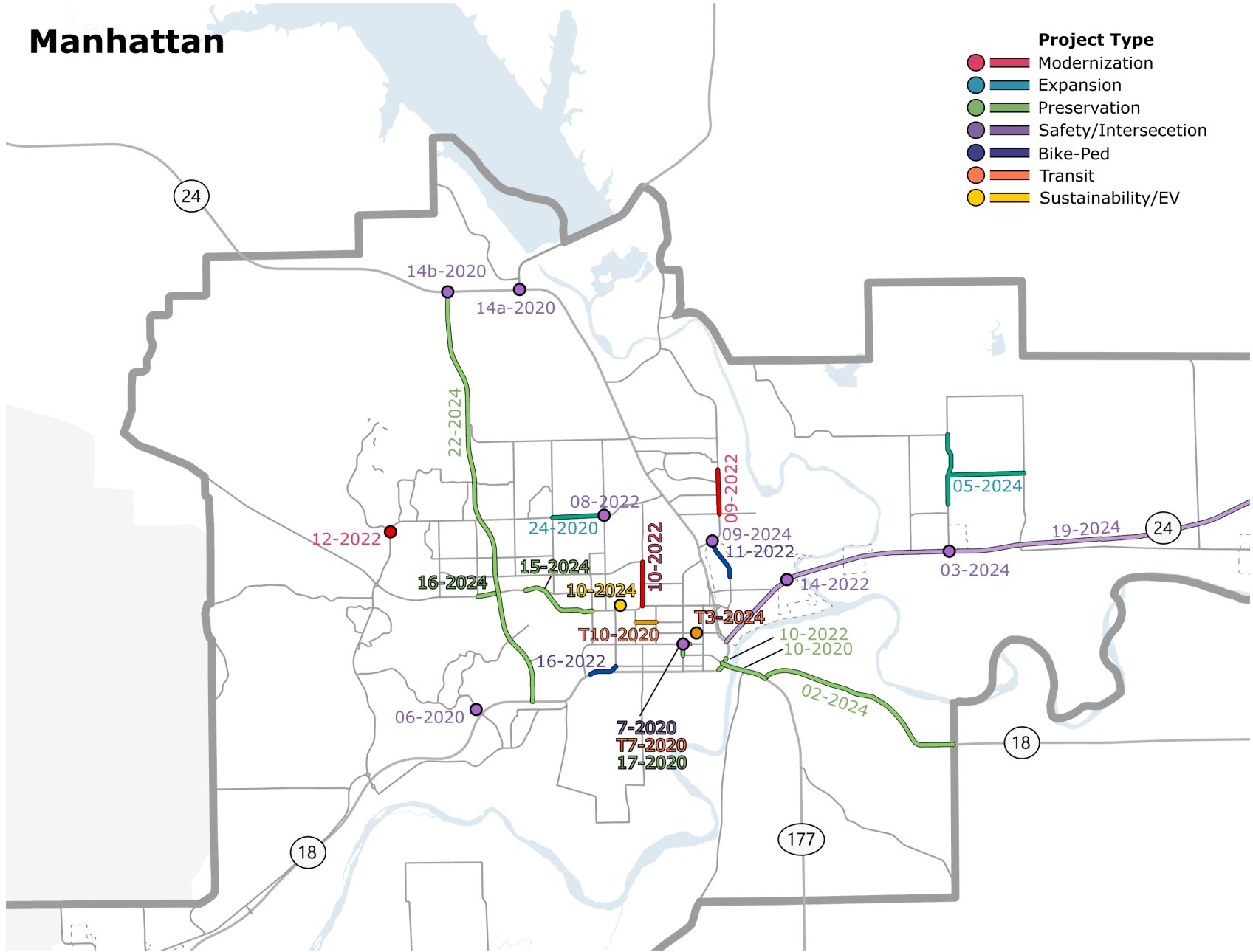
Appendix C: Summary of Changes

Project #	KDOT #	Project Name	Year	Phase	Phase Cost	Total Cost	Funding Source	Description of
14-2024	N-0816-01	City Loop Ph. 1 & Kaw Valley Rd Crossings	2025	CONST	\$114.4	\$114.4	CRP & Local	Change in Cost

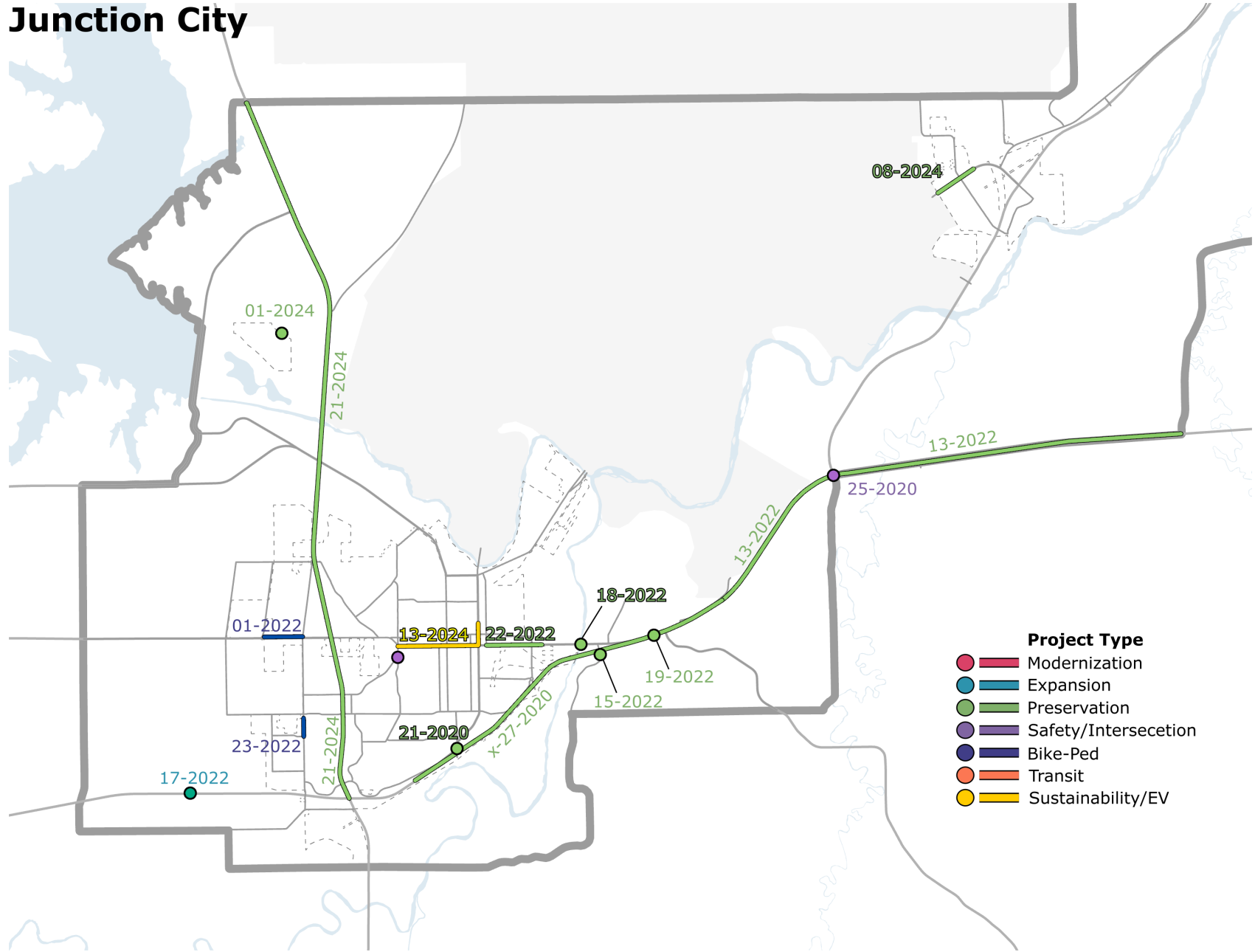
Appendix D: Project Maps

Manhattan

- Project Type**
- Modernization
 - Expansion
 - Preservation
 - Safety/Intersecetion
 - Bike-Ped
 - Transit
 - Sustainability/EV

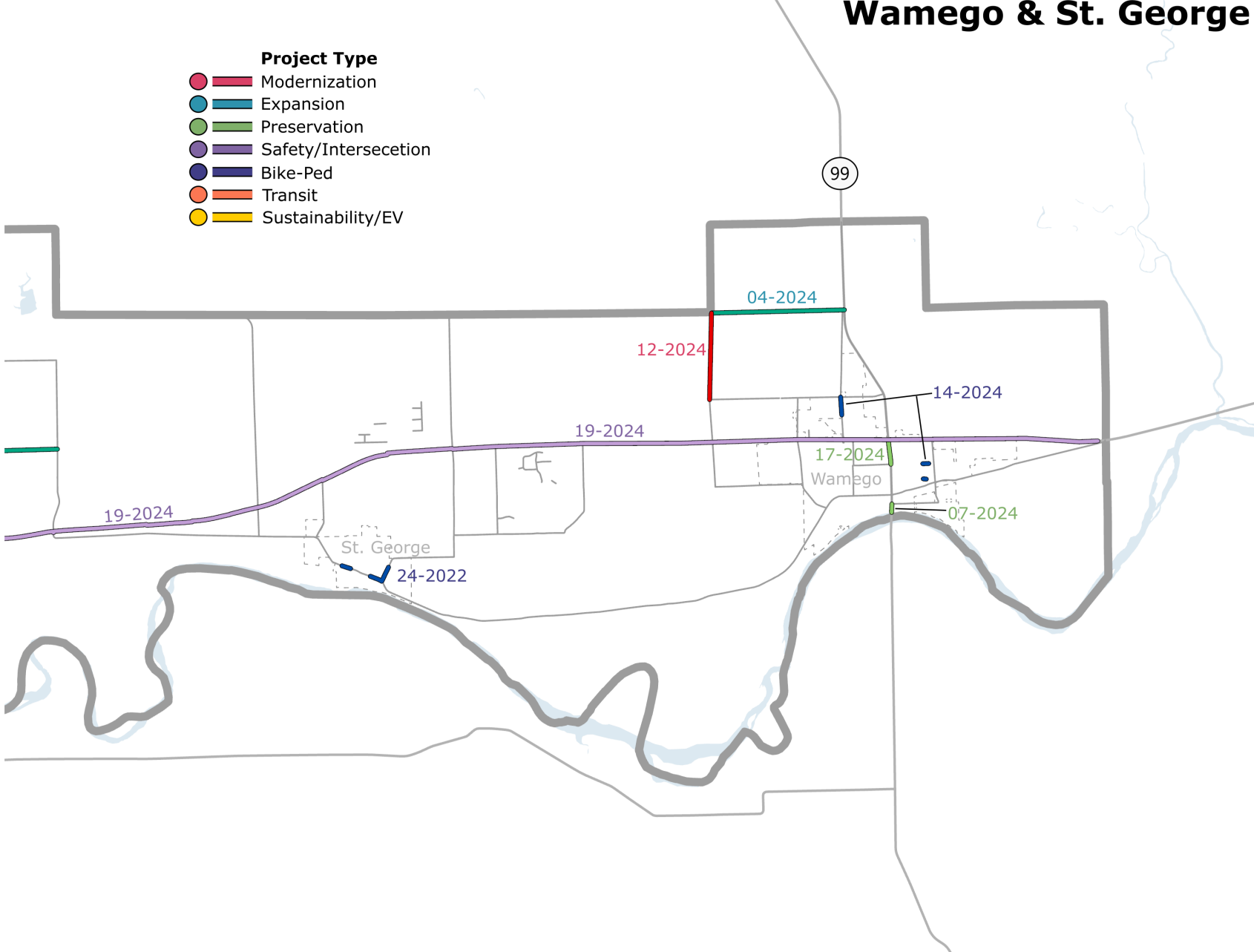


Junction City



Wamego & St. George

- Project Type**
- Modernization
 - Expansion
 - Preservation
 - Safety/Intersecetion
 - Bike-Ped
 - Transit
 - Sustainability/EV



Appendix E: Project Listing

Roadway Projects

TIP #	Project Type	FFY	Phase	Fed	State	Local	Total	Fed Source	AC
01-2022	Bike/Ped	2023	CONST	737.6	-	571.4	1,309.0	TA	
TE-0498-01	Length 0.33 mi								
C2040 # BP01	Project Sponsor Junction City			737.6	-	571.4	1,309.0		

Project Name Blue Jay Trail

Location: K-18: Karns Drive to Spring Valley Rd.

Connect 2040 Goal **Mobility**

Description 10' multiuse path on the north side of K-18 from Karns Dr to Spring Valley Rd.

Performance Measure PM6

TIP Entered 2022 - Original
Bike-Ped Yes

TIP Last Revised 2022 - A3
ITS No

TIP #	Project Type	FFY	Phase	Fed	State	Local	Total	Fed Source	AC
01-2024	Preservation	2025	CONST	888.3	-		888.3	BRO	
C-5231-01	Length			888.3			888.3		
C2040 #	Project Sponsor KDOT			888.3			888.3		

Project Name Old Milford Road Bridge Replacement

Location: Tributary of Republic River, 3.0 miles N & 1.0 mile West of Junction City

Connect 2040 Goal **Preservation**

Description Bridge Replacement

Performance Measure PM7, PM8

TIP Entered 2024 - Original
Bike-Ped No

TIP Last Revised 2024 - A3
ITS No

TIP #	Project Type	FFY	Phase	Fed	State	Local	Total	Fed Source	AC
02-2022	Planning	2023	PE	20.0	-	5.0	25.0	TA	
U-2405-01	Length			20.0		5.0	25.0		
C2040 # MP01	Project Sponsor City of Manhattan			20.0	-	5.0	25.0		

Project Name Manhattan SRTS PE Consultant

Location: Manhattan

Connect 2040 Goal

Description Phase 1 Study to update SRTS Plan

Performance Measure

TIP Entered 2022 - Original
Bike-Ped Yes

TIP Last Revised 2024 - Original
ITS No

TIP #	Project Type	FFY	Phase	Fed	State	Local	Total	Fed Source	AC
02-2024	Preservation	2023	PE		1.0		1.0		
KA-7043-01	Length 8.9 mi	2023	CONST		2,572.5		2,572.5		
C2040 #	Project Sponsor KDOT			-	2,573.5	-	2,573.5		

Project Name Milling and overlay on K-18 in RL County

Location: K-18: from east junction K-177/K-18, east to the RL/WB county line

Connect 2040 Goal

Description 1 inch cold mill and 1.5 inch overlay

Performance Measure

TIP Entered 2024 - Original
Bike-Ped No

TIP Last Revised
ITS No

TIP # 03-2024
 KDOT #
 C2040 #

Project Type Safety/Intersection
 Length
 Project Sponsor PT

FFY	Phase	Fed	State	Local	Total	Fed Source	AC
2024	PE			3,000.0	3,000.0		
			-	3,000.0	3,000.0		

Project Name US-24 & Excel Road Intersection Improvements

Location: US-24 at Excel Road

Description Intersectin improvements to include additional turn lanes and new traffic signals
 Connect 2040 Goal Safety
 Performance Measure PM3, PM4

TIP Entered 2024 - Original
 Bike-Ped No
 TIP Last Revised
 ITS No

TIP # 04-2024
 KDOT #
 C2040 #

Project Type Expansion
 Length 1.0 mi
 Project Sponsor PT

FFY	Phase	Fed	State	Local	Total	Fed Source	AC
2024	PE			3,000.0	3,000.0		
			-	3,000.0	3,000.0		

Project Name Elm Slough Road Improvements

Location: Elm Slough Road from Salzar Road to K-99

Description Roadway improvements including paving and widening an aggregate roadway. Improving vertical sight distance
 Connect 2040 Goal
 Performance Measure

TIP Entered 2024 - Original
 Bike-Ped No
 TIP Last Revised
 ITS No

TIP # 05-2024
 KDOT #
 C2040 #

Project Type Expansion
 Length 1.9 mi
 Project Sponsor PT

FFY	Phase	Fed	State	Local	Total	Fed Source	AC
2024	PE			6,000.0	6,000.0		
			-	6,000.0	6,000.0		

Project Name Harvest Road and Excel Road Improvements

Location: Harvest Road from Excel Road to Lake Elbo Road, and Harvest Road from Cara's Way to Junietta Road

Description Roadway improvements including paving and widening aggregate roadways. Constructing a new bridge on Excel, and adding sidewalks and a Multi-use Path.
 Connect 2040 Goal
 Performance Measure

TIP Entered 2024 - Original
 Bike-Ped Yes
 TIP Last Revised
 ITS No

TIP # 06-2020
 KDOT #
 C2040 # M26

Project Type Safety/Intersection
 Length 0.25 mi
 Project Sponsor City of Manhattan

FFY	Phase	Fed	State	Local	Total	Fed Source	AC
2024	PE			150.0	150.0		
2025	CONST			1,350.0	1,350.0		
			-	1,500.0	1,500.0		

Project Name Miller Pkwy & Arbor Dr Intersection

Location: Intersection of Miller Parkway and Arbor Drive

Description Construct roundabout at the intersection of Miller Parkway and Arbor Drive.
 Connect 2040 Goal
 Performance Measure

TIP Entered 2020 - Original
 Bike-Ped Yes
 TIP Last Revised 2020 - A3
 ITS No

TIP # 06-2024
 KDOT # KA-6062-02
 C2040 # P11

Project Type Safety/Intersection
 Length 4.75 mi
 Project Sponsor KDOT

FFY	Phase	Fed	State	Local	Total	Fed Source	AC
2024	PE		99.2		99.2		
2025	CONST		1,421.8		1,421.8		
			1,521.0	-	1,521.0		

Project Name I-70 in Geary County Guardrail Updates

Location: I-70: 1 mile east of US-77 interchange, east to east Grandview Plaza City Limits

Description Guardrail updates and preservation
 Connect 2040 Goal Preservation
 Performance Measure PM1, PM2

TIP Entered 2024 - A1
 Bike-Ped No
 TIP Last Revised 2024 - A5
 ITS No

TIP #	Project Type	FFY	Phase	Fed	State	Local	Total	Fed Source	AC
07-2020	Safety/Intersection	2022	CONST	-	-	1,070.0	1,070.0		
KDOT #	Length 0.2 mi								
C2040 # M17	Project Sponsor City of Manhattan					1,070.0	1,070.0		

Project Name Poyntz Ave and Juliette Ave Intersection

Location: Intersection of Poyntz Ave and Juliette Ave

Description Replace traffic signal poles, install ADA ramps, install stamped concrete crosswalks with curb extensions, and count down pedestrian signals

Connect 2040 Goal Performance Measure

TIP Entered 2022 - Original **TIP Last Revised** 2022 - A4
Bike-Ped Yes **ITS** No

TIP #	Project Type	FFY	Phase	Fed	State	Local	Total	Fed Source	AC
07-2024	Preservation	2025	CONST		887.6	46.7	934.3		X
KDOT # KA-7261-01	Length 0.062 mi								
C2040 #	Project Sponsor KDOT	2029		747.5	(747.5)		-	STP	
				747.5	140.1	46.7	934.3		

Project Name Wamego: Pavement Restoration on K-99

Location: Kansas River Bridge to Valley Street

Description Pavement reconstruction, replace curb & gutter, culvert upgrades, and pavement markings

Connect 2040 Goal Preservation Performance Measure PM1, PM2

TIP Entered 2024 - A3 **TIP Last Revised** 2024 - A8
Bike-Ped No **ITS** No

TIP #	Project Type	FFY	Phase	Fed	State	Local	Total	Fed Source	AC
08-2022	Safety/Intersection	2022	PE			900.0	900.0		
KDOT #	Length 0.45mi								
C2040 # E69	Project Sponsor City of Manhattan	2024	CONST			10,000.0	10,000.0		
				-	-	10,900.0	10,900.0		

Project Name Intersection of Kimball and Denison (NCC Phase 11)

Location: Intersection of Kimball and Denison

Description Roadway expansion & intersection improvements. Previous TIP# 0-25-2014. GO Bonds funding

Connect 2040 Goal Safety Mobility Performance Measure PM1, PM2 PM4

TIP Entered 2022 - Original **TIP Last Revised** 2022 - A3
Bike-Ped Yes **ITS** Yes

TIP #	Project Type	FFY	Phase	Fed	State	Local	Total	Fed Source	AC
08-2024	Preservation	2025	CONST	385.1		96.3	481.4	THUD	
KDOT #	Length 0.062 mi								
C2040 # P13	Project Sponsor KDOT			385.1	-	96.3	481.4		

Project Name Riley Avenue Corridor Revitalization Project

Location: Riley Ave from Ft. Riley to City of Ogden boundary, adjacent streets, and intersection of Riley Ave & Park St.

Description 2" mill and overlay on streets, and curb extensions and RRFBs at Park St intersection

Connect 2040 Goal Safety Performance Measure PM3, PM4, PM5

TIP Entered 2024 - A3 **TIP Last Revised**
Bike-Ped Yes **ITS** Yes

TIP #	Project Type	FFY	Phase	Fed	State	Local	Total	Fed Source	AC
09-2022	Modernization	2022	PE			100.0	100.0		
KDOT #	Length 0.60 mi								
C2040 # E08	Project Sponsor City of Manhattan			-	-	100.0	100.0		

Project Name Casement Road Improvements: Brookmont to Allen/Knox

Location: Casement Rd: Brookmont Dr to Allen Rd/Knox Ln

Description Expand roadway to include 3-lane roadway and multi-use path

Connect 2040 Goal Safety Performance Measure PM1, PM2, PM3, PM4, PM5

TIP Entered 2022 - Original **TIP Last Revised**
Bike-Ped Yes **ITS** Yes

TIP # 09-2024
 KDOT # N-0827-01
 C2040 #

Project Type Safety/Intersection
 Length
 Project Sponsor City of Manhattan

FFY	Phase	Fed	State	Local	Total	Fed Source	AC
2025	PE		42.5		42.5		
2027	CONST	513.5		114.7	628.2	HSIP	
		513.5	42.5	114.7	670.7		

Project Name Casement & Hayes Intersection

Location: Intersection of Casement Road & Hayes Dr

Description Reconstruct intersection with traffic and ped signals

Connect 2040 Goal Safety
 Performance Measure PM3, PM4, PM5

TIP Entered 2024 - A3
 Bike-Ped Yes

TIP Last Revised 2024 - A8
 ITS No

TIP # 10-2020
 KDOT # KA-5469-01
 C2040 # P09

Project Type Preservation
 Length 0.70 mi
 Project Sponsor KDOT

FFY	Phase	Fed	State	Local	Total	Fed Source	AC
2022	PE		38.6		38.6		
2023	CONST	3,243.3	810.8		4,054.1	NHPP	X
		3,243.3	849.4	-	4,092.7		

Project Name K-18 heavy preservation near K-177

Location: K-18: West Junction K-18/K-177 east to the East Junction K-18/K-177

Description Pavement replacement

Connect 2040 Goal Preservation
 Performance Measure PM3

TIP Entered 2020 - A1
 Bike-Ped No

TIP Last Revised 2024 - A1
 ITS No

TIP # 10-2024
 KDOT # KA-7507-01
 C2040 #

Project Type Sustainability/EV
 Length
 Project Sponsor K-State

FFY	Phase	Fed	State	Local	Total	Fed Source	AC
2025	CONST	105.2		26.3	131.4	CRP	
		105.2	-	26.3	131.4		

Project Name K-State Parking Garage EV Chargers

Location: K-State Parking garage

Description Four EV level 2 chargers (1 port each) installed in the K-State parking garage

Connect 2040 Goal
 Performance Measure

TIP Entered 2024 - A3
 Bike-Ped No

TIP Last Revised 2024 - A8
 ITS No

TIP # 10-2022
 KDOT #
 C2040 # M40

Project Type Modernization
 Length 0.58 mi
 Project Sponsor City of Manhattan

FFY	Phase	Fed	State	Local	Total	Fed Source	AC
2022	PE			100.0	100.0		
2023	CONST			2,900.0	2,900.0		
		-	-	3,000.0	3,000.0		

Project Name N. Manhattan Ave, Campus Creek, & Bayberry Infrastructure Improvements

Location: N. Manhattan: Claflin to Bluemont

Description Upgrade flashing yellow beacons to full traffic signals for pedestrians. Construct two-way bike lane on west side with barrier to Vattier. Realign Campus Creek road with Bertrand & adding roundabout on campus

Connect 2040 Goal Safety Mobility Prosperity
 Performance Measure PM5, PM6 PM4, PM6 PM4, PM5

TIP Entered 2022 - Original
 Bike-Ped Yes

TIP Last Revised 2022 - A3
 ITS Yes

TIP # 11-2022
 KDOT #
 C2040 # BP01

Project Type Bike/Ped
 Length 0.71 mi
 Project Sponsor City of Manhattan

FFY	Phase	Fed	State	Local	Total	Fed Source	AC
2021	PE			150.0	150.0		
2024	CONST			1,000.0	1,000.0		
		-	-	1,150.0	1,150.0		

Project Name Hayes Dr Trail

Location: Hayes: McCall to Casement

Description 10 feet or 8 feet wide Trail from Casement to McCall Road along Hayes Dr.

Connect 2040 Goal Mobility
 Performance Measure PM6

TIP Entered 2022 - Original
 Bike-Ped Yes

TIP Last Revised
 ITS No

TIP # 11-2024
 KDOT # U-2537-01
 C2040 #

Project Type Preservation
 Length
 Project Sponsor K-State

FFY	Phase	Fed	State	Local	Total	Fed Source	AC
2025	PE		18.7	6.2	24.9		
			18.7	6.2	24.9		

Project Name Barrier repair concept Kansas State University

Location: KSU campus in Manhattan, KS

Description Experimental proof of concept for manufacture of lightweight bridge pair barrier upgrades to meet modern safety standards

Connect 2040 Goal
 Performance Measure

TIP Entered 2024 - A4
 Bike-Ped No

TIP Last Revised
 ITS No

TIP # 12-2022
 KDOT #
 C2040 # M26

Project Type Modernization
 Length 0.33 mi
 Project Sponsor City of Manhattan

FFY	Phase	Fed	State	Local	Total	Fed Source	AC
2021	PE			300.0	300.0		
2023	CONST			3,000.0	3,000.0		
		-	-	3,300.0	3,300.0		

Project Name Kimball Ave Roundabout Replacement

Location: Kimball Ave: Berkshire to Vanesta Drive

Description Replace Roundabout, sidewalk improvements, pavement rehab

Connect 2040 Goal Safety
 Performance Measure PM3

TIP Entered 2022 - Original
 Bike-Ped Yes

TIP Last Revised
 ITS No

TIP # 12-2024
 KDOT #
 C2040 #

Project Type Modernization
 Length
 Project Sponsor PT

FFY	Phase	Fed	State	Local	Total	Fed Source	AC
2024	COSNT			1,420.3	1,420.3		
		-	-	1,420.3	1,420.3		

Project Name Salzer Road Improvements

Location: Salzer Road from Say Rd to Elm Slough Rd

Description Upgrade to a rural paved 2-lane roadway

Connect 2040 Goal
 Performance Measure

TIP Entered 2024 - A4
 Bike-Ped No

TIP Last Revised
 ITS No

TIP # 13-2022
 KDOT # KA-6278-01
 C2040 # P09

Project Type Preservation
 Length 15.5 mi
 Project Sponsor KDOT

FFY	Phase	Fed	State	Local	Total	Fed Source	AC
2021	PE		1.0		1.0		
2022	CONST		4,526.0		4,526.0		X
2024	CONST	4,073.5	(4,073.5)		-	Conv-NHPP	
		4,073.5	453.5	-	4,527.0		

Project Name Patching on I-70 east of K-57

Location: I-70: .64 miles east of I-70/K-57 to Geary/Riley County Line

Description Patching and resealing joints

Connect 2040 Goal Preservation
 Performance Measure PM1,PM2

TIP Entered 2014 - Original
 Bike-Ped No

TIP Last Revised 2022 - A4
 ITS No

TIP # 13-2024
 KDOT #
 C2040 #

Project Type Sustainability/EV
 Length
 Project Sponsor JC

FFY	Phase	Fed	State	Local	Total	Fed Source	AC
2026	CONST	304.0		76.0	380.0	CRP	
		304.0	-	76.0	380.0		

Project Name 6th St & Washington St ITS Corridor

Location: Traffic signals on 6th from Eisenhower to Washington, and on Washington from 6th to 10th

Description Replace existing signal boxes and electronics and install ITS capabilities

Connect 2040 Goal Mobility
 Performance Measure PM 4

TIP Entered 2024 - A4
 Bike-Ped Yes

TIP Last Revised
 ITS Yes

TIP #	Project Type	FFY	Phase	Fed	State	Local	Total	Fed Source	AC
TIP # 14a-2020	Safety/Intersection	2024	PE		594.7		594.7		
KDOT # KA-5565-01	Length	2024	ROW		297.3		297.3		
C2040 # M20	Project Sponsor KDOT	2024	UTIL		297.3		297.3		
Project Name Roundabout at US-24 & K-13		2024	CONST	5,887.3	654.2		6,541.5	CONV - HSIP 25	X
Location: Intersection of K-13 and US-24 in Riley County				5,887.3	1,843.5	-	7,730.8		
Description Construct single-lane roundabout at intersection to improve safety.		Connect 2040 Goal Safety Performance Measures PM3, PM4							
TIP Entered 2020 - A3	TIP Last Revised 2024 - A6								
Bike-Ped No	ITS No								

TIP #	Project Type	FFY	Phase	Fed	State	Local	Total	Fed Source	AC
TIP # 14b-2020	Safety/Intersection	2024	PE		466.4		466.4		
KDOT # KA-5564-01	Length	2024	ROW		233.2		233.2		
C2040 # M21	Project Sponsor KDOT	2024	UTIL		233.2		233.2		
Project Name Roundabout at US-24 & K-113		2024	CONST	4,617.7	513.0		5,130.7	CONV - HSIP 25	X
Location: Intersection of K-113 and US-24 in Riley County				4,617.7	1,445.8	-	6,063.5		
Description Construct single-lane roundabout at intersection to improve safety.		Connect 2040 Goal Safety Performance Measures PM3, PM4							
TIP Entered 2020 - A3	TIP Last Revised 2024 - A6								
Bike-Ped No	ITS No								

TIP #	Project Type	FFY	Phase	Fed	State	Local	Total	Fed Source	AC
TIP # 14-2022	Safety/Intersection	2023	CONST		800.0	569.2	1,369.2		
KDOT # KA-6497-01	Length 0.28 mi								
C2040 #	Project Sponsor City of Manhattan			-	800.0	569.2	1,369.2		
Project Name US-24 & Levee Drive Intersection Improvements									
Location: US-24 & Levee Drive Intersection									
Description Intersection improvements to include addition of turn lanes, new traffic signal, and traffic signal coordination		Connect 2040 Goal Safety Performance Measure PM1, PM2, PM3, PM4							
TIP Entered 2022 - A1	TIP Last Revised 2024 - Original								
Bike-Ped No	ITS Yes								

TIP #	Project Type	FFY	Phase	Fed	State	Local	Total	Fed Source	AC
TIP # 14-2024	Bike/Ped	2025	CONST	91.6		22.9	114.4	CRP	
KDOT # N-0816-01	Length								
C2040 #	Project Sponsor WAM			91.6	-	22.9	114.4		
Project Name City Loop Ph. 1 & Kaw Valley Rd Crossings									
Location: 6th St, 8th St, and Kaw Valley Rd									
Description Install Sidewalk on 6th & 8th streets. Install RRFBs at crossings on Kaw Valley Rd		Connect 2040 Goal Performance Measure							
TIP Entered 2024 - A4	TIP Last Revised 2024 - A8 Admin. Mod.								
Bike-Ped Yes	ITS No								

TIP #	Project Type	FFY	Phase	Fed	State	Local	Total	Fed Source	AC
TIP # 15-2022	Preservation	2022	PE	449.4	49.9		499.3	NHPP	X
KDOT # KA-6483-01	Length	2025	ROW		33.3		33.3		
C2040 # P12	Project Sponsor KDOT	2025	UTIL	15.0	1.7		16.7	NHPP	X
Project Name I-70 Bridge Replacement at J. Hill Road		2025	CONST	3,295.6	366.2		3,661.8	NHPP	X
Location: Bridge #016: I-70 and J Hill Road				3,760.0	451.1	-	4,211.1		
Description Bridge Replacement		Connect 2040 Goal Preservation Performance Measures PMS,PM6							
TIP Entered 2022 - A2	TIP Last Revised 2024 - A8								
Bike-Ped No	ITS No								

TIP # 15-2024
 KDOT #
 C2040 #

Project Type Preservation
 Length
 Project Sponsor MHK

FFY	Phase	Fed	State	Local	Total	Fed Source	AC
2025	CONST	2,700.0	-	7,300.0	10,000.0	ARPA	
		2,700.0	-	7,300.0	10,000.0		

Project Name Anderson Ave Reconstruction: Connecticut to Sunset

Location: Anderson Ave from Connecticut to Sunset

Description Reconstruct the roadway and sidewalks
 Connect 2040 Goal Performance Measure

TIP Entered 2024 - A4
 Bike-Ped No

TIP Last Revised
 ITS No

TIP # 16-2022
 KDOT # TE-0526-01
 C2040 # BP01

Project Type Bike/Ped
 Length 0.50 mi
 Project Sponsor City of Manhattan

FFY	Phase	Fed	State	Local	Total	Fed Source	AC
2025	CONST	2,063.2	-	515.8	2,579.0	TA	
		2,063.2	-	515.8	2,579.0		

Project Name Sidewalk Extension on Fort Riley Blvd

Location: K18 from Westwood to 17th, to Yuma St, and traffic signal upgrade

Description Complete sidewalk from 17th & Yuma, west towards Westwood Dr.
 Connect 2040 Goal Performance Measure

TIP Entered 2022 - A2
 Bike-Ped Yes

TIP Last Revised 2024 - A8
 ITS No

TIP # 16-2024
 KDOT #
 C2040 #

Project Type Preservation
 Length
 Project Sponsor MHK

FFY	Phase	Fed	State	Local	Total	Fed Source	AC
2025	CONST	-	-	2,000.0	2,000.0	ARPA	
		-	-	2,000.0	2,000.0		

Project Name Anderson Ave Reconstruction: Wreath to K113

Location: Anderson Ave from Wreath to K113

Description Reconstruct the roadway and driveways
 Connect 2040 Goal Performance Measure

TIP Entered 2024 - A4
 Bike-Ped No

TIP Last Revised
 ITS No

TIP # 17-2020
 KDOT # TE-0525-01
 C2040 #

Project Type Preservation
 Length 0.15 mi
 Project Sponsor City of Manhattan

FFY	Phase	Fed	State	Local	Total	Fed Source	AC
2025	CONST	1,229.9	-	307.5	1,537.4	TA	
		1,229.9	-	307.5	1,537.4		

Project Name Juliette Ave - Phase IV

Location: Juliette Ave: Poyntz to Pierre

Description Brick Rehab on Juliette. Address storm sewer issues. Create curb extensions at intersection of Pierre
 Connect 2040 Goal Prosperity Performance Measure PM3, PM4

TIP Entered 2020 - A3
 Bike-Ped Yes

TIP Last Revised 2024 - A3
 ITS No

TIP # 17-2022
 KDOT # KA-6541-02
 C2040 # E61

Project Type Expansion
 Length
 Project Sponsor KDOT

FFY	Phase	Fed	State	Local	Total	Fed Source	AC
2024	PE		753.7		753.7		x
2025	ROW		376.8		376.8		
2026	UTIL		226.9		226.9		x
2029	PE	678.3	(678.3)		-	NHPP	
2029	UTIL	204.2	(204.2)		-	NHPP	
		882.5	474.9	-	1,357.4		

Project Name I-70 & Taylor Road Interchange

Location: I-70 and Taylor Road

Description Discovery phase for bridge replacement and new interchange. Project authorized for PE, ROW, & UTIL only
 Connect 2040 Goal Preservation Performance Measure PMS, PM6

TIP Entered 2022 - Original
 Bike-Ped No

TIP Last Revised 2024 - A8
 ITS No

TIP # 17-2024
 KDOT # U-2560-01
 C2040 #

Project Type Preservation
 Length 0.3
 Project Sponsor WAM

FFY	Phase	Fed	State	Local	Total	Fed Source	AC
2025	CONST		400.0	177.8	577.8		
		-	400.0	177.8	577.8		

Project Name K-99 Pavement Restoration from 8th St to US-24

Location: K-99: 8th St to US-24

Description 2" mill & overlay, signal loop detector replacement, striping, curb & gutter, & sidewalk
 Connect 2040 Goal Preservation
 Performance Measure PM3, PM4

TIP Entered 2024 - A5
 Bike-Ped Yes
 TIP Last Revised ITS No

TIP # 18-2022
 KDOT # KA-6772-01
 C2040 # P09

Project Type Preservation
 Length
 Project Sponsor KDOT

FFY	Phase	Fed	State	Local	Total	Fed Source	AC
2023	PE		37.0		37.0		
2024	CONST		417.4		417.4		
		-	454.4	-	454.4		

Project Name Repair Bridge #037 on US-40B3 in Geary County

Location: Bridge #037 on US-40, 1.32 miles east of US-77 (Smoky Hill River)

Description
 Connect 2040 Goal Preservation
 Performance Measure PM7

TIP Entered 2022 - A3
 Bike-Ped No
 TIP Last Revised 2024 - A1
 ITS No

TIP # 18-2024
 KDOT # TE-0556-01
 C2040 #

Project Type Safety/Intersection
 Length
 Project Sponsor JC

FFY	Phase	Fed	State	Local	Total	Fed Source	AC
2025	PE			259.0	259.0		
2025	UTL			337.8	337.8		
2026	CONST	1,721.1		430.4	2,151.5	CRP	
		1,721.1	-	1,027.2	2,748.3		

Project Name Junction City McFarland Roundabout

Location: Intersection of McFarland Rd & Eisenhower Dr

Description Construct roundabout, sidewalks, crosswalks, and truck aprons, upgrade storm sewer system, install street lighting
 Connect 2040 Goal Safety
 Performance Measure PM5, PM6

TIP Entered 2024 - A6
 Bike-Ped Yes
 TIP Last Revised ITS No

TIP # 19-2022
 KDOT # KA-6838-01
 C2040 # P09

Project Type Preservation
 Length
 Project Sponsor KDOT

FFY	Phase	Fed	State	Local	Total	Fed Source	AC
2023	PE		720.2		720.2		x
2024	ROW		48.0		48.0		
2025	UTL		24.0		24.0		x
2030	PE	648.2	(648.2)			Conv-BRF	
2030	UTL	21.6	(21.6)			Conv-BRF	
		669.8	122.4	-	792.2		

Project Name Repair Bridge #017 on I-70 in Geary County

Location: I-70: Bridge #017, 3.13 miles east of West Junction US40B3/I-170 (Just west of J-Hill Rd)

Description Deck patch & petromat overlay
 Connect 2040 Goal Preservation
 Performance Measure PM5, PM6

TIP Entered 2022 - A3
 Bike-Ped No
 TIP Last Revised 2024 - A5
 ITS No

TIP # 19-2024
 KDOT # KA-7064-01
 C2040 #

Project Type Safety/Intersection
 Length 28 mi
 Project Sponsor KDOT

FFY	Phase	Fed	State	Local	Total	Fed Source	AC
2025	PE		14.2		14.2		
2028	CONST		202.8		202.8		
		-	217.0	-	217.0		

Project Name US-24 Signing in Pottawatomie County

Location: US-24 from junction K-177/US-24, east to the east city limits of St. Marys.

Description Purchase of safety corridor program materials and labor for installation by KDOT staff in Pottawatomie County on the US-24 corridor.
 Connect 2040 Goal Safety
 Performance Measure PM1, PM2, PM3, PM4

TIP Entered 2024 - A8
 Bike-Ped No
 TIP Last Revised ITS No

TIP # 20-2024
 KDOT # KA-7372-01
 C2040 #

Project Type Planning
 Length 31.7
 Project Sponsor KDOT

FFY	Phase	Fed	State	Local	Total	Fed Source	AC
2025	PE		751.0	249.0	1,000.0		
		-	751.0	249.0	1,000.0		

Project Name US-24 Corridor Management Plan

Location: US-24: US-24/US-77 southeast junction, east to the US-24/Airport Road junction east of Wamego

Description Investigate traffic patterns, land-use, and development impacts to plan for transportation improvements that will meet future needs.

Connect 2040 Goal **Preservation**
 Performance Measure PM3, PM4, PM7, PM8

TIP Entered 2024 - A8
 Bike-Ped No

TIP Last Revised
 ITS No

TIP # 21-2020
 KDOT # KA-5996-01
 C2040 # P09

Project Type Preservation
 Length 0.14 mi
 Project Sponsor KDOT

FFY	Phase	Fed	State	Local	Total	Fed Source	AC
2023	CONST		717.2	79.7	796.9		X
2023	CONST	637.5	(637.5)		-	Conv-STP	
		637.5	79.7	79.7	796.9		

Project Name US-40B and Washington Roundabout Preservation

Location: US-40B and Washington Roundabout

Description Surfacing Project, tied to KA-6062-01

Connect 2040 Goal
 Performance Measure

TIP Entered 2020 - A5
 Bike-Ped No

TIP Last Revised 2022 - A4
 ITS No

TIP # 21-2024
 KDOT # KA-7734-01
 C2040 #

Project Type Preservation
 Length 16.4 mi
 Project Sponsor KDOT

FFY	Phase	Fed	State	Local	Total	Fed Source	AC
2025	PE		1.0		1.0		
2025	CONST	4,121.3	1,030.4		5,151.7	NHPP	
		4,121.3	1,030.4	-	5,152.7		

Project Name Milling & overlay on US-77 in GE County

Location: US-77: I-70/US-77 junction, north to the GE/RL county line

Description Mill & overlay

Connect 2040 Goal **Preservation**
 Performance Measure PM3, PM4

TIP Entered 2024 - A8
 Bike-Ped No

TIP Last Revised
 ITS No

TIP # 22-2022
 KDOT # U-2380-01
 C2040 # P09

Project Type Preservation
 Length 0.57 mi
 Project Sponsor City of Junction City

FFY	Phase	Fed	State	Local	Total	Fed Source	AC
2024	CONST		300.0	41.2	341.2		
		-	300.0	41.2	341.2		

Project Name Mill & overlay K-57 Surface Preservation

Location: K-57 from North Franklin St to Reynolds St

Description Mill & overlay with pavement markings on K-57. Replacement of ADA ramps

Connect 2040 Goal
 Performance Measure

TIP Entered 2022 - A3
 Bike-Ped No

TIP Last Revised
 ITS No

TIP # 22-2024
 KDOT # KA-7731-01
 C2040 #

Project Type Preservation
 Length 16.4 mi
 Project Sponsor KDOT

FFY	Phase	Fed	State	Local	Total	Fed Source	AC
2025	PE		1.0		1.0		
2025	CONST	3,184.6	796.1		3,980.7	NHPP	
		3,184.6	796.1	-	3,981.7		

Project Name Milling & overlay on K-113 in RL County

Location: K-113: K-18/K-113 junction, north to the US-24/K-113 junction

Description 2 inch milling & overlay & contract striping

Connect 2040 Goal **Preservation**
 Performance Measure PM3, PM4

TIP Entered 2024 - A8
 Bike-Ped No

TIP Last Revised
 ITS No

TIP # 23-2022
 KDOT # TE-0522-01
 C2040 #

Project Type Bike/Ped
 Length 0.24 mi
 Project Sponsor City of Junction City

FFY	Phase	Fed	State	Local	Total	Fed Source	AC
2025	CONST	244.9		61.2	306.1	TA	
		244.9	-	61.2	306.1		

Project Name Spring Valley Rd Sidewalk Improvements

Location: Spring Valley Rd from south of Ash to Valley Dr

Description **Connect 2040 Goal**
 Performance Measure

TIP Entered 2022 - A4
 Bike-Ped Yes

TIP Last Revised 2024 - A3
 ITS No

TIP # 24-2020
 KDOT # KA-5899-01
 C2040 # E37

Project Type Expansion
 Length 0.80 mi
 Project Sponsor City of Manhattan

FFY	Phase	Fed	State	Local	Total	Fed Source	AC
2023	CONST		2,897.8	3,542.7	6,440.5		
		-	2,897.8	3,542.7	6,440.5		

Project Name Kimball Ave: College to Denison (NCC Phase IX) Cost Share

Location: Kimball Ave: College Ave to Denison Ave

Description Widen existing to 5-lane with paved median for access control & dedicated left turn lane. New traffic signal at Kimball/Grain Science entrance. 1/2 mi of new MUP
Connect 2040 Goal Mobility Prosperity
 Performance Measure PM6 PM4

TIP Entered 2020 - A4
 Bike-Ped Yes

TIP Last Revised 2022 - A4
 ITS Yes

TIP # 24-2022
 KDOT # TE-0532-01
 C2040 #

Project Type Bike/Ped
 Length 0.24 mi
 Project Sponsor City of St. George

FFY	Phase	Fed	State	Local	Total	Fed Source	AC
2025	CONST	1,226.0		306.5	1,532.5	TA	
		1,226.0	-	306.5	1,532.5		

Project Name Increasing the Walkability/Bikeability of St. George

Location: Chapman Rd, 6th St, Lincoln St., & 1st St

Description Installation of sidewalk along 1st and Chapman Rd connecting to downtown & elementary school. Downtown curb extensions and crosswalk. Chapman road crossing &
Connect 2040 Goal Mobility
 Performance Measure PM6

TIP Entered 2022 - A4
 Bike-Ped Yes

TIP Last Revised 2024 - A3
 ITS No

TIP # 25-2020
 KDOT # KA-6018-01
 C2040 # M15

Project Type Safety/Intersection
 Length 2.2 mi
 Project Sponsor KDOT

FFY	Phase	Fed	State	Local	Total	Fed Source	AC
2021	PE		1,574.6		1,574.6		x
2025	ROW	344.5	382.8		727.3		
2025	UTIL		38.3		38.3		x
2025	CONST		13,717.2		13,717.2		x
2026	PE	1,447.0	(1,447.0)		-	Conv-NHPP	
2027	UTIL	38.3	(38.3)		-	Conv-NHPP	
2027	CONST	12,345.5	(12,345.5)		-	Conv-NHPP	
		14,175.3	1,882.1	-	16,057.4		

Project Name I-70 and K-18 Interchange

Location: I-70 and K-18 Interchange

Description Install new EB auxiliary lane from Henry Gate to Exit 313. Install fly over ramp from EB I-70 to NB K-18. Alter turn ramp from SB K-18 to WB I-70
Connect 2040 Goal Safety Preservation
 Performance Measures PM3, PM4 PM5

TIP Entered 2020 - A5
 Bike-Ped No

TIP Last Revised 2024 - A8
 ITS No

TIP # 27-2020
 KDOT # KA-6062-01
 C2040 # P11

Project Type Preservation
 Length 4.75 mi
 Project Sponsor KDOT

FFY	Phase	Fed	State	Local	Total	Fed Source	AC
2021	PE		777.2		777.2		X
2023	CONST		31,248.8		31,248.8		X
2025	PE	699.6	(699.6)		-	Conv - NHPP	
2025	CONST	28,123.9	(28,123.9)		-	Conv - NHPP	
		28,823.5	3,202.5	-	32,026.0		

Project Name I-70 Pavement Replacement

Location: I-70: 1 mile east of US-77 interchange, east to east Grandview Plaza City Limits

Description Pavement Replacement beginning 1 mile east of US-77/I-70 then East to East City Limits of Grandview Plaza. Tied to KA-5996-01
Connect 2040 Goal Preservation
 Performance Measure PM1, PM2

TIP Entered 2020 - A5
 Bike-Ped No

TIP Last Revised 2024 - Original
 ITS No

Transit and Paratransit Projects

TIP #	T1-2022	Project Type	Transit/Paratransit	FFY	Phase	Fed	State	Local	Total	Source	AC
KDOT #		Project Sponsor	Flint Hills ATA	2023	OPR/ADMIN	639.2	243.7	395.5	1,278.4	5307	
C2040 #				2024	OPR/ADMIN	1,525.6	547.5	632.7	2,705.8	5307	
				2024	OPR/ADMIN	372.0			372.0	5307 ARA	
Project Name	FHATA Urban Transit Service Operating Expenses			2025	OPR/ADMIN	610.1	203.4	305.0	1,118.5	5307	
				2026	OPR/ADMIN	788.8	262.9	394.4	1,446.1	5307	
Location:	Manhattan Urbanized Area					3,935.7	1,257.5	1,727.6	6,920.8		

Description The transit services provided in the Manhattan UZA. Includes operations, administration, and preventative maintenance.

Connect 2040 Goal Performance Measures

TIP Entered 2022 - A3
Bike-Ped No

TIP Last Revised 2024 - Original
ITS No

TIP #	T1-2024	Project Type	Transit/Paratransit	FFY	Phase	Fed	State	Local	Total	Source	AC
KDOT #		Project Sponsor	Flint Hills ATA	2024	CAP*	197.3	24.6	24.6	246.5	5339	
C2040 #				2024	CAP**	231.0	57.7		288.7	5307	
				2024	CAP***	80.0	20.0		100.0	5307	
Project Name	FHATA Building and Improvement Project			2024	CAP****	291.6	72.9	0.3	364.8	5307	
						799.9	175.2	24.9	1,000.0		

Location: ATA Offices

Description *Building Expansion & Improvement
**Parking Lot expansion
***Safety & Security Improvements
****Supplemental

Connect 2040 Goal Performance Measure

TIP Entered 2024 - Original
Bike-Ped No

TIP Last Revised
ITS No

TIP #	T2-2022	Project Type	Transit/Paratransit	FFY	Phase	Fed	State	Local	Total	Source	AC
KDOT #		Project Sponsor	Flint Hills ATA	2023	OPR/ADMIN	811.1	221.6	396.6	1,429.3	5311	
C2040 #				2024	OPR/ADMIN	668.0	180.0	277.0	1,125.0	5311	
				2025	OPR/ADMIN	590.6	190.5	314.3	1,095.4	5311	
Project Name	FHATA Rural Services					2,069.7	592.1	987.9	3,649.7		

Location: FHMPD Region

Description Operating assistance and admin for areas outside of the Manhattan Urbanized Area, including Junction City and Fort Riley

Connect 2040 Goal Performance Measure

TIP Entered 2022 - A1
Bike-Ped No

TIP Last Revised 2024 - A4
ITS No

TIP #	T2-2024	Project Type	Transit/Paratransit	FFY	Phase	Fed	State	Local	Total	Source	AC
KDOT #		Project Sponsor	Flint Hills ATA	2024	CAP*	800.0	100.0	100.0	1,000.0	AIC	
C2040 #						800.0	100.0	100.0	1,000.0		

Project Name FHATA Junction City Facility Grant

Location: Junction City

Description * New Maintenance & Bus Parking facility

Connect 2040 Goal Performance Measure

TIP Entered 2024 - Original
Bike-Ped No

TIP Last Revised
ITS No

TIP #	Project Type	FFY	Phase	Fed	State	Local	Total	Source	AC
T3-2022	Transit/Paratransit	2025	CAP	464.2	25.9		490.1	5307	
KDOT #	Project Sponsor	2026	CAP	250.0	62.5		312.5	5307	
C2040 #				714.2	88.4	-	802.6		

Project Name FHATA Board Bus Capital Program

Location: Manhattan Urbanized Area

Description Purchase of 20-passenger busses
Connect 2040 Goal Performance Measure

TIP Entered 2022 - Original
Bike-Ped No

TIP Last Revised 2024 - A4
ITS No

TIP #	Project Type	FFY	Phase	Fed	State	Local	Total	Source	AC
T3-2024	Transit/Paratransit	2024	CAP	500.0		250.0	750.0	5307	
KDOT #	Project Sponsor			1,928.4	176.8	250.0	2,355.2		
C2040 #									

Project Name 5th & Leavenworth Stop Improvements

Location: Manhattan

Description Bus stop improvements with curb extensions, new sidewalk, and ADA ramps
Connect 2040 Goal Prosperity
Performance Measure PM1, PM3, PM4

TIP Entered 2024 - A1
Bike-Ped Yes

TIP Last Revised
ITS No

TIP #	Project Type	FFY	Phase	Fed	State	Local	Total	Source	AC
T4-2022	Transit/Paratransit	2025	CAP*	80.0	20.0		100.0	5307	
KDOT #	Project Sponsor	2025	CAP**	100.0	25.0		125.0	5307	
C2040 #		2025	CAP***	48.0	6.0		54.0	5307	
		2025	CAP****	112.0		22.4	134.4	5307	
				340.0	51.0	22.4	413.4		

Project Name FHATA Urban Planning Projects

Location: Manhattan Urbanized Area

Description * Electric Vehicle Study
** Route System Study
*** MicroTransit Study
**** Planning
Connect 2040 Goal Performance Measure

TIP Entered 2022 - A3
Bike-Ped No

TIP Last Revised 2024 - A4
ITS No

TIP #	Project Type	FFY	Phase	Fed	State	Local	Total	Source	AC
T5-2022	Transit/Paratransit	2025	CAP	117.0		29.3	146.3	CRP	
KDOT #	Project Sponsor			117.0	-	29.3	146.3		
C2040 # KA-7687-17									

Project Name Big Lakes Developmental Center Capital

Location: Riley, Geary and Pottawatomie Counties

Description Capital Purchases. Local match source, county mill
Connect 2040 Goal Performance Measure

TIP Entered 2022 - Original
Bike-Ped No

TIP Last Revised 2024 - A7
ITS No

TIP #	Project Type	FFY	Phase	Fed	State	Local	Total	Source	AC
T6-2022	Transit/Paratransit	2023	CAP	25.0	6.3		31.3	5307	
KDOT #	Project Sponsor	2024	CAP	38.4	9.6		48.0	5307	
C2040 #		2024	CAP	109.2		27.3	136.5	5307	
		2025	CAP	406.7		101.7	508.4	5307	
		2026	CAP	526.0		131.5	657.5	5307	
				1,105.3	15.9	260.5	1,381.7		

Project Name FHATA Parking Lot Expansion and Technology for Shelters

Location: FHMPPO Region

Description Real-time passenger information devices for bus shelter projects
Connect 2040 Goal Performance Measures

TIP Entered 2022 - Original
Bike-Ped No

TIP Last Revised 2024 - A4
ITS No

TIP #	Project Type	FFY	Phase	Fed	State	Local	Total	Source	AC
T7-2020	Transit/Paratransit	2023	CAP	523.0	65.4	65.4	653.8	5310	
KDOT #	Project Sponsor	2023	CAP	80.0	20.0		100.0	5307	
C2040 #				603.0	85.4	65.4	753.8		

Project Name 600 Block of Poyntz Bus Stop Improvements

Location: Manhattan

Description ADA upgrades and bus stop improvements on the 600 Block of Poyntz. Part of KDOT's Access, Innovation, and Collaboration grant
 Connect 2040 Goal Prosperity
 Performance Measure PM1, PM3, PM4

TIP Entered 2020 - Original
 Bike-Ped Yes
 TIP Last Revised 2024 - A4
 ITS No

TIP #	Project Type	FFY	Phase	Fed	State	Local	Total	Source	AC
T7-2022	Transit/Paratransit	2022	CAP	140.8	17.6	17.6	176.0	5339/5310	
KDOT #	Project Sponsor	2024	CAP	156.0	19.5	19.5	195.0	5339/5310	
C2040 #				296.8	37.1	37.1	371.0		

Project Name K-18 Connector Expansion (Pilot)

Location: MPO Region

Description 2021 KDOT AIC Grant Award - KDOT Grant award to extend the K-18 Connector from Ogden to Junction City as part of the JCFR System. 2 Year Pilot with purchase of vehicles
 Connect 2040 Goal
 Performance Measure

TIP Entered 2022 - Original
 Bike-Ped No
 TIP Last Revised 2024 - Original
 ITS No

TIP #	Project Type	FFY	Phase	Fed	State	Local	Total	Source	AC
T8-2022	Transit/Paratransit	2023	CAP	131.1		32.7	163.8	5311	
KDOT #	Project Sponsor			131.1	-	32.7	163.8		
C2040 #									

Project Name FHATA Rural Bus Capital Program

Location: Areas outside Manhattan UZA

Description
 Connect 2040 Goal
 Performance Measure

TIP Entered 2022 - Original
 Bike-Ped No
 TIP Last Revised
 ITS No

TIP #	Project Type	FFY	Phase	Fed	State	Local	Total	Source	AC
T10-2020	Transit/Paratransit	2023	CAP	340.8		85.2	426.0	5310	
KDOT #	Project Sponsor			340.8	-	85.2	426.0		
C2040 #									

Project Name Fremont Roadway and Bus Stop Improvements

Location: Manhattan

Description Reconstruct Fremont Street with new curb extensions, rain gardens, and Bus Shelter
 Connect 2040 Goal Mobility Prosperity
 Performance Measure PM6 PM1, PM3, PM4

TIP Entered 2020 - Original
 Bike-Ped Yes
 TIP Last Revised 2022 - A4
 ITS No

TIP #	Project Type	FFY	Phase	Fed	State	Local	Total	Source	AC
T12-2018	Transit/Paratransit	2025	CAP*	80.0	38.7		118.7	5307	
KDOT #	Project Sponsor	2025	Cap**	18.3	4.7		23.0	5339	
C2040 #		2025	CAP***	30.4		7.6	38.0	5339	
				128.7	43.4	7.6	179.7		

Project Name FHATA Misc. Capital Improvements

Location: FHMPPO Region

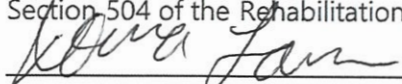
Description * Supplemental Maintenance Vehicle
 ** Maintenance Vehicle
 *** Administrative Vehicle
 Connect 2040 Goal
 Performance Measure

TIP Entered 2018 - Original
 Bike-Ped No
 TIP Last Revised 2024 - A4
 ITS No

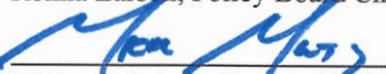
Appendix F: MPO Self-Certification

Concurrent with the submittal of the proposed TIP to the FHWA and the FTA, the Flint Hills Metropolitan Planning Organization (MPO) certifies that the metropolitan transportation planning process is carried out in accordance with all applicable requirements, including:

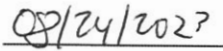
- 1) 23 U.S.C. 134, 49 U.S.C. 5303, and this subpart;
- 2) In nonattainment and maintenance areas, sections 174 and 176 (c) and (d) of the Clean Air Act, as amended (42 U.S.C. 7504, 7506 (c) and (d)) and 40 CFR part 93;
- 3) Title VI of the Civil Rights Act of 1964, as amended (42 U.S.C. 2000d-1) and 49 CFR part 21;
- 4) 49 U.S.C. 5332, prohibiting discrimination on the basis of race, color, creed, national origin, sex, or age in employment or business opportunity;
- 5) Section 1101(b) of the Fixing America's Surface Transportation Act (Pub. L. 114-357) and 49 CFR part 26 regarding the involvement of disadvantaged business enterprises in USDOT funded projects;
- 6) 23 CFR part 230, regarding the implementation of an equal employment opportunity program on Federal and Federal-aid highway construction contracts;
- 7) The provisions of the Americans with Disabilities Act of 1990 (42 U.S.C. 12101 et seq.) and 49 CFR Parts 27, 37, and 38;
- 8) The Older Americans Act, as amended (42 U.S.C. 6101), prohibiting discrimination on the basis of age in programs or activities receiving Federal financial assistance;
- 9) Section 324 of the title 23 U.S.C. regarding the prohibition of discrimination based on gender; and
- 10) Section 504 of the Rehabilitation of 1973 (29 U.S.C. 794) and 49 CFR part 27 regarding discrimination against individuals with disabilities.

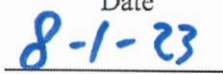


Ronna Larson, Policy Board Chairperson



Michael Moriarty, Bureau Chief, Transportation Planning



Date


Date

Appendix G: Public Comment Period Summary

A 15-day public comment period was held prior to Policy Board approval. No public comments was received.

The public notice of public involvement activities and time established for public review and comment on the TIP will satisfy the Program of Projects (POP) requirements of the Section 5307 Program.

	Public Comment Period Opens	Public Comment Period Closes	TAC Recommendation	Policy Board Approval	STIP Amendment
2024 TIP	June 30	August 1	August 2	August 16	September 7, 2023
Amendment #1	November 17	December 4	December 5	December 20	January 4, 2024
Amendment #2	February 20	March 6	March 6	March 20	May 9, 2024
Amendment #3	May 20	June 4	July 3	July 17	July 19, 2024
Amendment #4	July 15	August 6	August 7	August 21	September 5, 2024
Amendment #5	September 18, 2024	October 1, 2024	October 2, 2024	October 16, 2024	November 7, 2024
Amendment #6	January 20, 2025	February 4, 2025	February 5, 2025	February 19, 2025	March 6, 2025
Amendment #7	April 17, 2025	May 1, 2025	May 1, 2025	May 1, 2025	May 8, 2025
Amendment #8	May 19, 2025	June 3, 2025	June 4, 2025	June 18, 2025	July 10, 2025