

## OUR VISION

Our vision for the year 2040 is to Enhance Mobility, Strengthen Communities, and Generate Prosperity. These are the critical components to ensuring our region is resilient and economically sound over the next two decades. While we can't be certain what the future holds, we must begin to alter the status quo if we want to have self-sustaining communities.



### ENHANCE MOBILITY

Providing a safe, connected, and equitable multi-modal transportation system to safely and efficiently move people and freight.



### STRENGTHEN COMMUNITIES

Through sustainable development choices and strategic transportation investments, we can create livable and economically sound communities for generations to come.



### GENERATE PROSPERITY

Provide opportunities to promote community prosperity by considering equity, the environment, and economics in transportation decision-making.



Flint Hills Metropolitan  
Planning Organization (MPO)  
[www.FlintHillsMPO.org](http://www.FlintHillsMPO.org)  
[FHMP0@FlintHillsMPO.org](mailto:FHMP0@FlintHillsMPO.org)



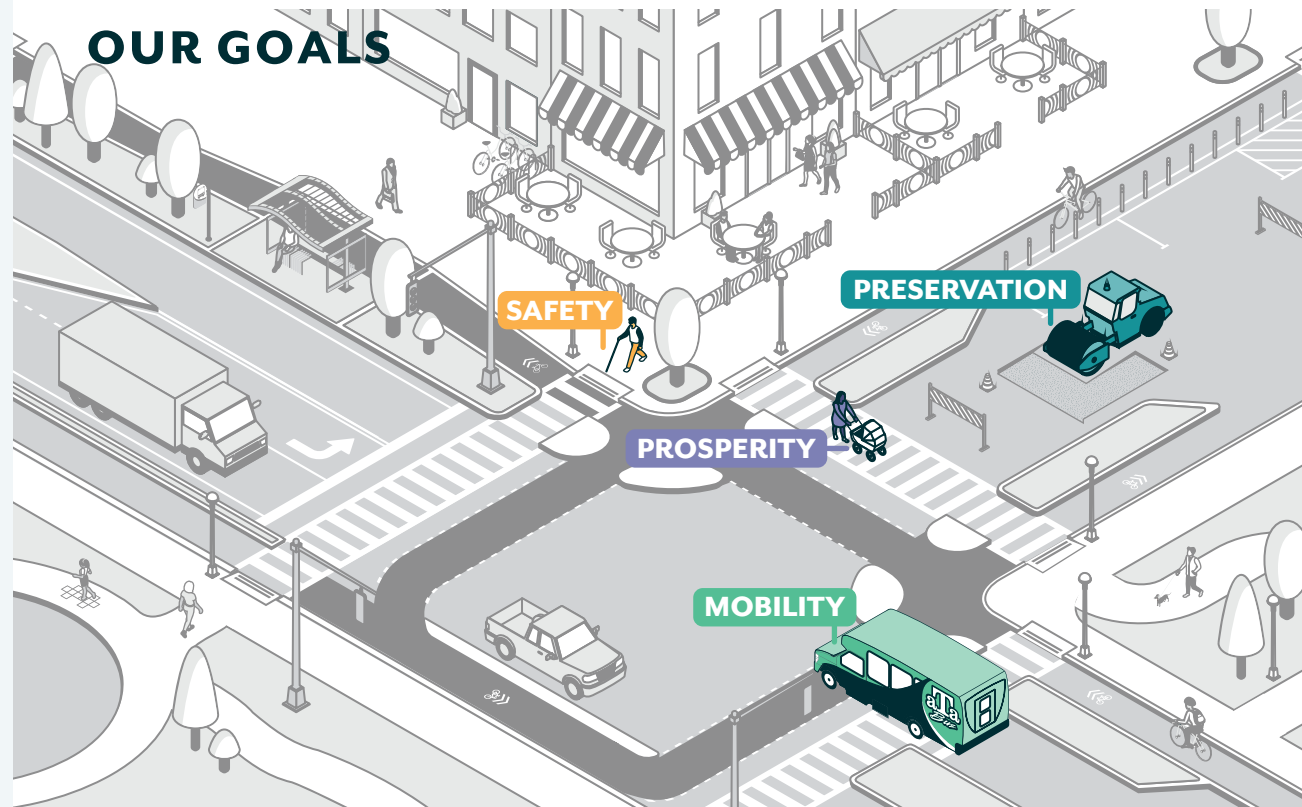
## LONG-RANGE TRANSPORTATION PLAN

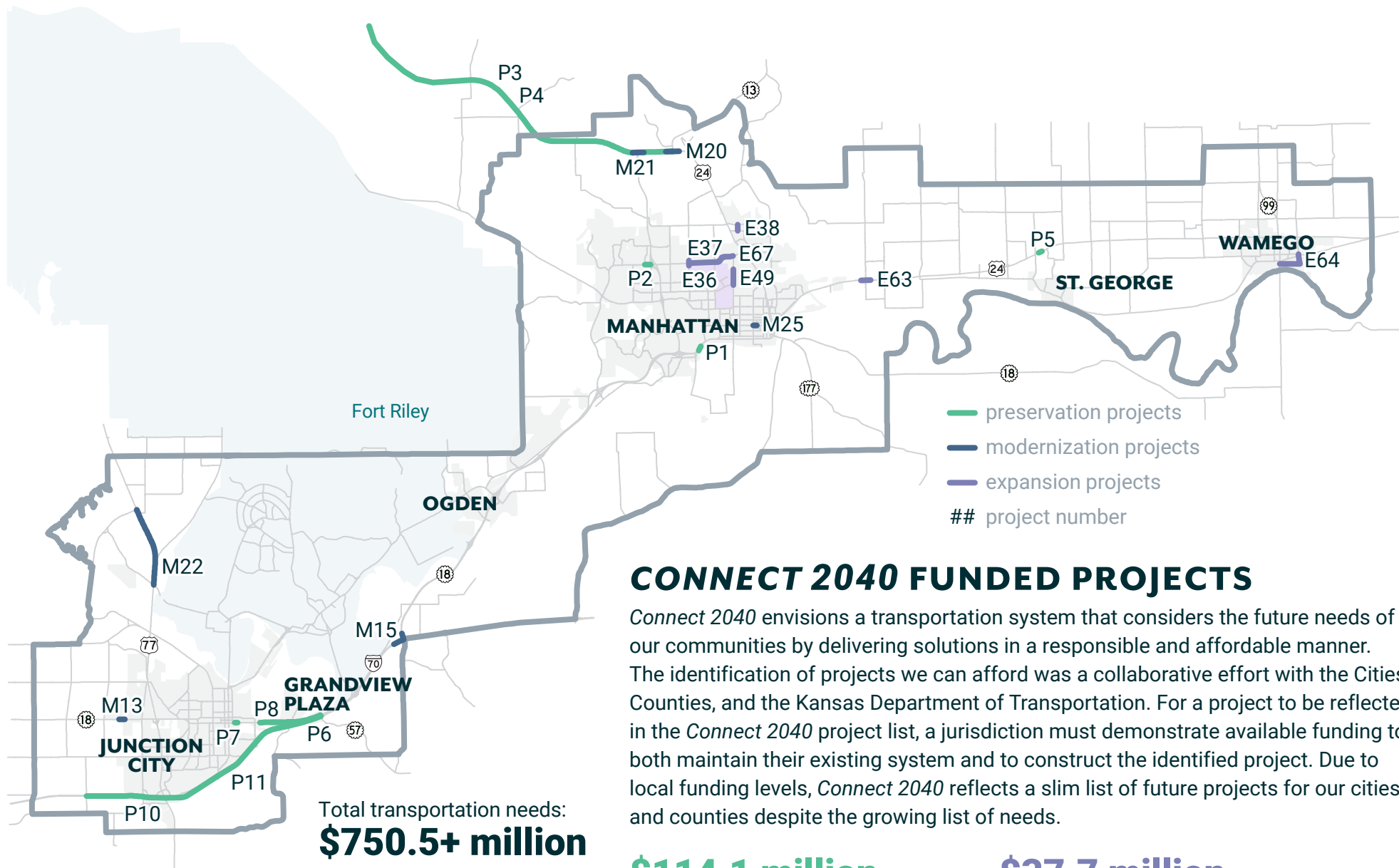
Adopted December 2020

*Connect 2040* is the guiding document for the evolution of our region's transportation system over the next twenty years. The plan addresses all modes of transportation (driving, walking, biking, and public transit), building on previous efforts and plans, our current transportation assets, and public input to create a realistic plan to achieve our transportation vision and goals.

Long-range transportation plans are federally-required documents, standard throughout the United States. From a practical standpoint, long-range transportation planning serves as the foundation for responsible decision-making when it comes to implementing transportation projects. *Connect 2040* identifies needed projects throughout our region while also outlining the projects we can reasonably afford.

## OUR GOALS





- preservation projects
- modernization projects
- expansion projects
- ## project number

## CONNECT 2040 FUNDED PROJECTS

Connect 2040 envisions a transportation system that considers the future needs of our communities by delivering solutions in a responsible and affordable manner. The identification of projects we can afford was a collaborative effort with the Cities, Counties, and the Kansas Department of Transportation. For a project to be reflected in the Connect 2040 project list, a jurisdiction must demonstrate available funding to both maintain their existing system and to construct the identified project. Due to local funding levels, Connect 2040 reflects a slim list of future projects for our cities and counties despite the growing list of needs.

**\$114.1 million**

preservation projects: preserving our existing infrastructure

**\$37.7 million**

expansion projects: a new roadway or adding a lane to an existing roadway

**\$56.4 million**

modernization projects: upgrading an existing roadway

**\$542.3 million**

unfunded projects

