

---

# **ANNUAL LISTING OF OBLIGATED PROJECTS 2015**

---

November 30, 2015

---



# Annual Listing of Obligated Projects

The Moving Ahead for Progress in the 21<sup>st</sup> Century (MAP-21) transportation legislation enacted by Congress in July 2012 requires that:

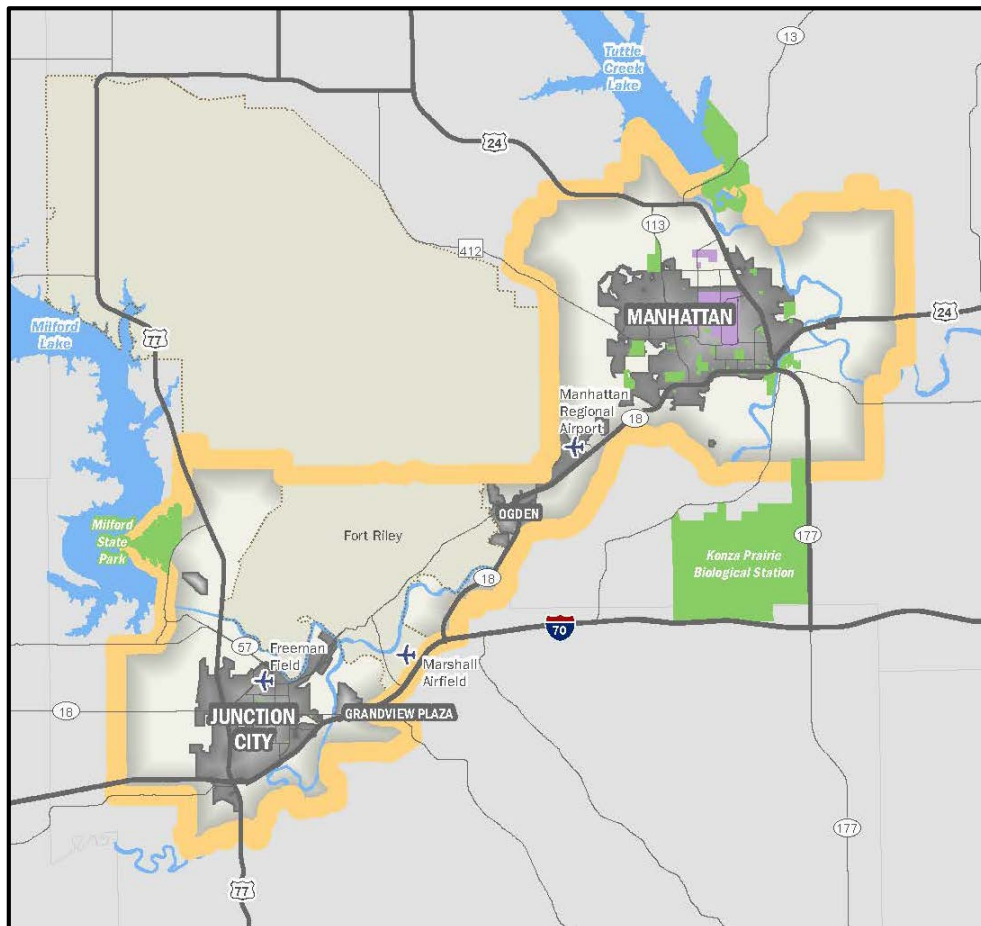
*“An annual listing of projects, including investments in pedestrian walkways and bicycle transportation facilities, for which Federal funds have been obligated in the preceding year shall be published or otherwise made available by the cooperative effort of the State, transit operator, and metropolitan planning organization for public review.” 23 CFR 134(j)(7)(B)*

As required, this report lists all transportation projects authorized or revised to increase obligations of federal transportation funds in the Flint Hills Metropolitan Planning Area during the 2015 program year (October 1, 2014 – September 30, 2015). The federal government obligates, or commits, funds to a project only after the completion of the required project development process and all local, state, and federal approvals have been obtained. The obligated amounts reflected in this report may not be equal to the final project cost. Additionally, the report indicates those projects for which bicycle and pedestrian elements are included.

## Flint Hills Metropolitan Planning Organization

The Flint Hills Metropolitan Planning Organization (FHMPO) is the designated Metropolitan Planning Organization (MPO) for the Manhattan, Kansas Urbanized Area. The FHMPO serves a much larger area than just the City of Manhattan; consisting of four cities (the City of Manhattan, the City of Junction City, the City of Ogden, and the City of Grandview Plaza), portions of three counties (Riley County, Pottawatomie County, and Geary County), and the southern portion of the Fort Riley Military Installation.

Figure 1: FHMPO Area



The FHMPO is governed by a Policy Board comprised of locally elected individuals representing the three counties and two major cities, as well as a representative from the Kansas Department of Transportation.

As the designated MPO for the Manhattan region, the FHMPO is responsible for the development of plans and programs that provide for the development and integrated management and operation of transportation systems that will function as a multimodal transportation system, projected to be urbanized within the next 20 years.

## The Transportation Improvement Program

The Transportation Improvement Program (TIP) documents how the Flint Hills region prioritizes the limited transportation resources available for the various needs of the region. It includes a staged, four-year list of surface transportation projects proposed for federal, state and local funding within the metropolitan area. Inclusion of a project in the TIP represents a major milestone in the project development process that enables a project to receive and expend federal funding.

The FHMPO develops the TIP cooperatively with representatives from local jurisdictions, public transportation agencies, the Kansas Department of Transportation, and other interested parties. The Technical Advisory Committee (TAC) then recommends approval of the document and the final authority for approval of the TIP rests with the FHMPO Policy Board. The Policy Board approved the current 2016-2019 TIP on August 19, 2015.

Under federal regulations, the TIP must:

- Cover a period of no less than four years;
- Be updated at least every four years;
- Be approved by the MPO, the State of Kansas, and the Federal Highway and Federal Transit Administrations;
- Be consistent with the approved Flint Hills Transportation Plan;
- Demonstrate that proposed transportation investments are financially realistic and achievable;
- Lists all federally funded and regionally significant projects regardless of funding source; and
- Include all modes of surface transportation projects.

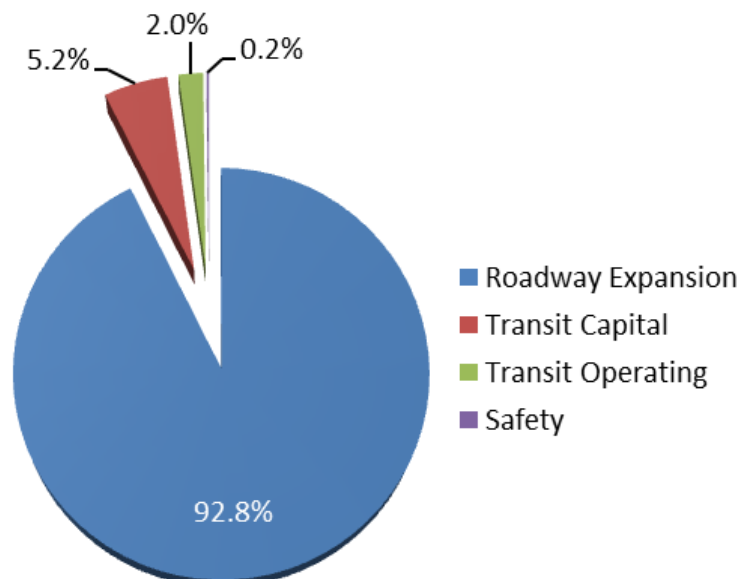
## Summary of Projects

In federal fiscal year 2015, 15 projects in the Flint Hills region were obligated for a total just short of \$7.7 million in federal transportation funds. Of this, \$7.2 million (92.8%) was for highway expansion/capacity projects; \$402,400 (5.2%) for transit capital; \$154,200 (2.0%) for transit operating; and \$15,200 (0.2%) for safety-related projects (as shown in Figure 2).

## Obligation Report

The FHMPO is not directly involved in the obligation of federal funds, so this report is based on information provided by the Kansas Department of Transportation and the Flint Hills Area Transportation Agency. Shown in Table 1 for each project are the TIP (or STIP) identification number, project name, the 2015 federal obligation amount, and the amount of federal funding remaining on the project.

Figure 2: Obligated Funding by Project Type



Additionally, the report indicates those projects that included bicycle and pedestrian elements.

Only obligated federal funds are included in this report, no local or state funds are reflected. As indicated earlier, the obligated amount shown may not reflect the total project cost. It should be noted that for the projects with FTA funds reflect any projects awarded or buses ordered during the federal fiscal year.

**Table 1: 2015 Obligation List of Projects**

TIP #	KDOT #	Project Name/Location	Project Description	Federal Funding Source	Project Type	Federal Funds Requested in TIP	Federal Funds Obligated in FFY 2015	Federal Funds Obligated to Date	Federal Funds Remaining	Bike &/or Ped Elements	Project Status
*Note	C-0314-01	Riley County: Various Locations	Replace Guard Fence and Bridge Rails	HSIP	Safety	302.5	(29.7)	272.8	29.7	No	Closed
*Note	KA-0410-05	K-18: Walnut St (Ogden) to K-113/Seth Child	Construct 4-lane Freeway	STP	Roadway Expansion	18,264.5	1,640.9	26,114.6	(7850.1)	No	Complete
6-15-2014	KA-2367-02	US-77: I-70 DDI, US-77 Improvements Rucker Rd to S of US-57	Construct 4-lane on US-77, DDI at I-70/US-77, additional intersection improvements	STP	Roadway Expansion	836.0	179.7	839.6	(3.6)	No	Active
6-14-2014	KA-2367-03	US-77: Lacy Dr to K-18 & K-18/Spring Valley Rd Intersection	Reconstruct K-18/Spring Valley Rd intersection, US-77 improvements	NHPP	Roadway Expansion	4,402.8	4,550.8	4,710.7	(307.9)	No	Active
6-14-2014	KA-2367-03	US-77: Lacy Dr to K-18 & K-18/Spring Valley Rd Intersection	Reconstruct K-18/Spring Valley Rd intersection, US-77 improvements	HPD	Roadway Expansion	1,399.3	839.3	1,399.3	(0.0)	No	Active
*Note	TE-0365-01	Phase 3 of Tuttle Creek Blvd Drainage Ditch	Drainage Ditch Improvements	TEA	Transportation Enhancement Activity	1,305.0	(83.0)	1,004.5	300.5	Yes	Closed
*Note	U-0007-01	Kimball & Candlewood Intersection	Signal Installation	HSIP	Safety	150.0	(0.0)	150.0	(0.0)	No	Closed
4-18-2014	U-0168-01	K-113 and Kimball Intersection	Signal Installation	HSIP	Safety	395.7	45.0	450.0	(54.3)	No	Complete
*Note	U-2159-02	City of Junction City	Sidewalk/bike path construction	SRTS	Bicycle/ Pedestrian	250.0	(0.0)	250.0	(0.0)	Yes	Closed
1-T8-2014	N/A	Big Lakes Developmental Center, Inc.	Operating	5317	Transit Operating	98.6	98.8	98.8	(0.2)	N/A	N/A
4-T2-2014	N/A	Flint Hills Area Transportation Agency	Capital - Mobility Manager	5317	Transit Operating	55.3	55.3	55.3	(0.0)	N/A	N/A
1-T8-2014	N/A	Big Lakes Developmental Center, Inc.	Capital - 14 Passenger lift equipped bus	5316	Transit Capital	50.0	45.7	45.7	4.3	N/A	N/A
5-T13-2014	N/A	Pawnee Mental Health	Capital - Full Size Van	5310	Transit Capital	28.9	28.5	28.5	0.4	N/A	N/A
0-T6-2016	N/A	Flint Hills ATA	Capital - 20 Passenger lift equipped bus	5339	Transit Capital	46.9	46.9	46.9	(0.0)	N/A	N/A
0-T6-2016	N/A	Flint Hills ATA	Capital - 6-20 Passenger lift equipped bus	5339	Transit Capital	281.2	281.2	281.2	(0.0)	N/A	N/A

\*Note: Project programmed in the State Transportation Improvement Program

### Summary of Funding Acronyms

- HSIP-Highway Safety Improvement Program
- HPD-High Priority Demonstration Project
- NHPP-National Highway Preservation Program
- SRTS-Safe Routes to School
- STP-Surface Transportation Program
- TEA-Transportation Enhancements Activities