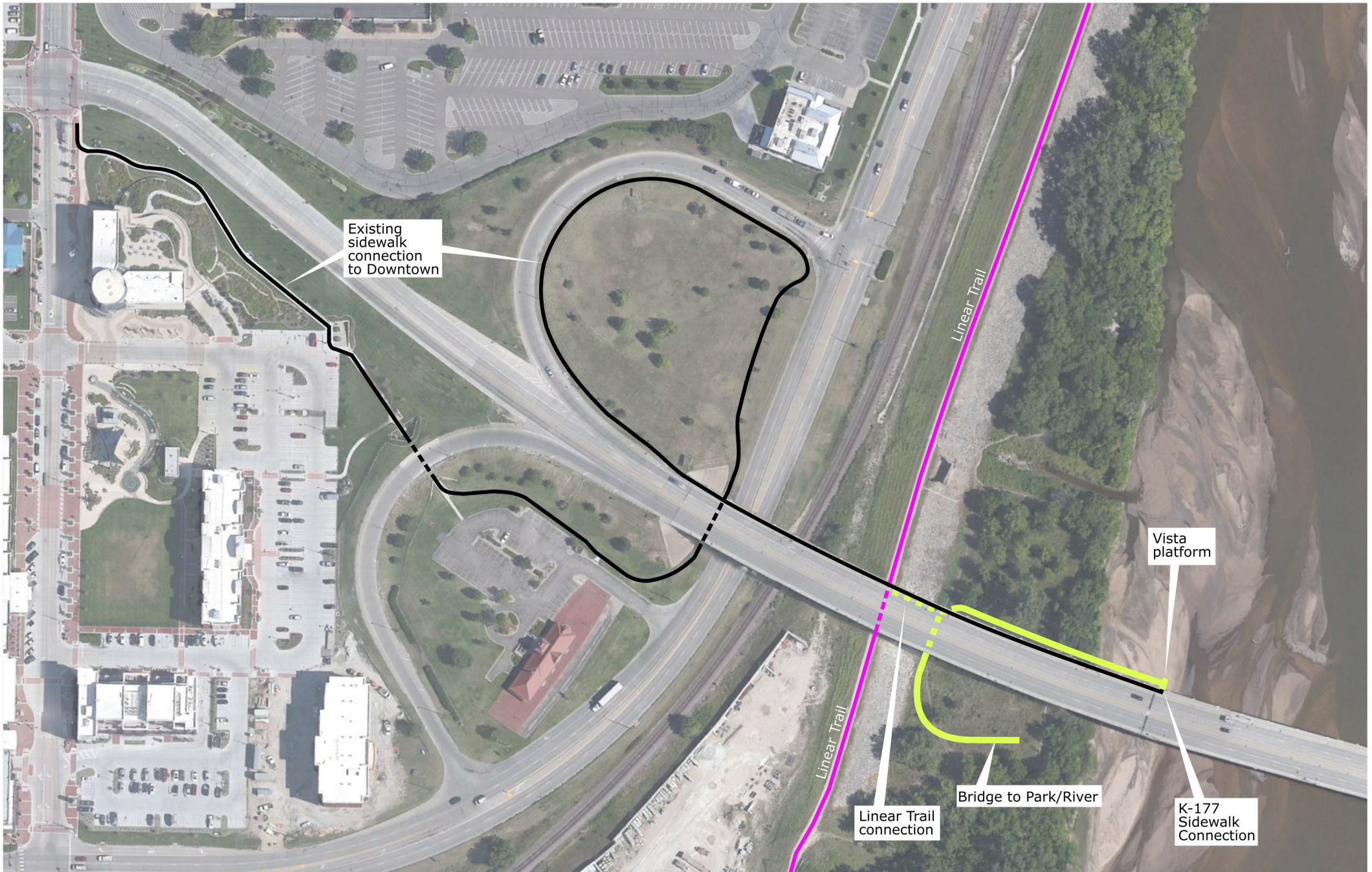


Downtown > Levee Trail & River

Idea: Utilize & leverage what infrastructure we have to minimize costs & build on existing behaviors/routing



Existing sidewalk connection to Downtown

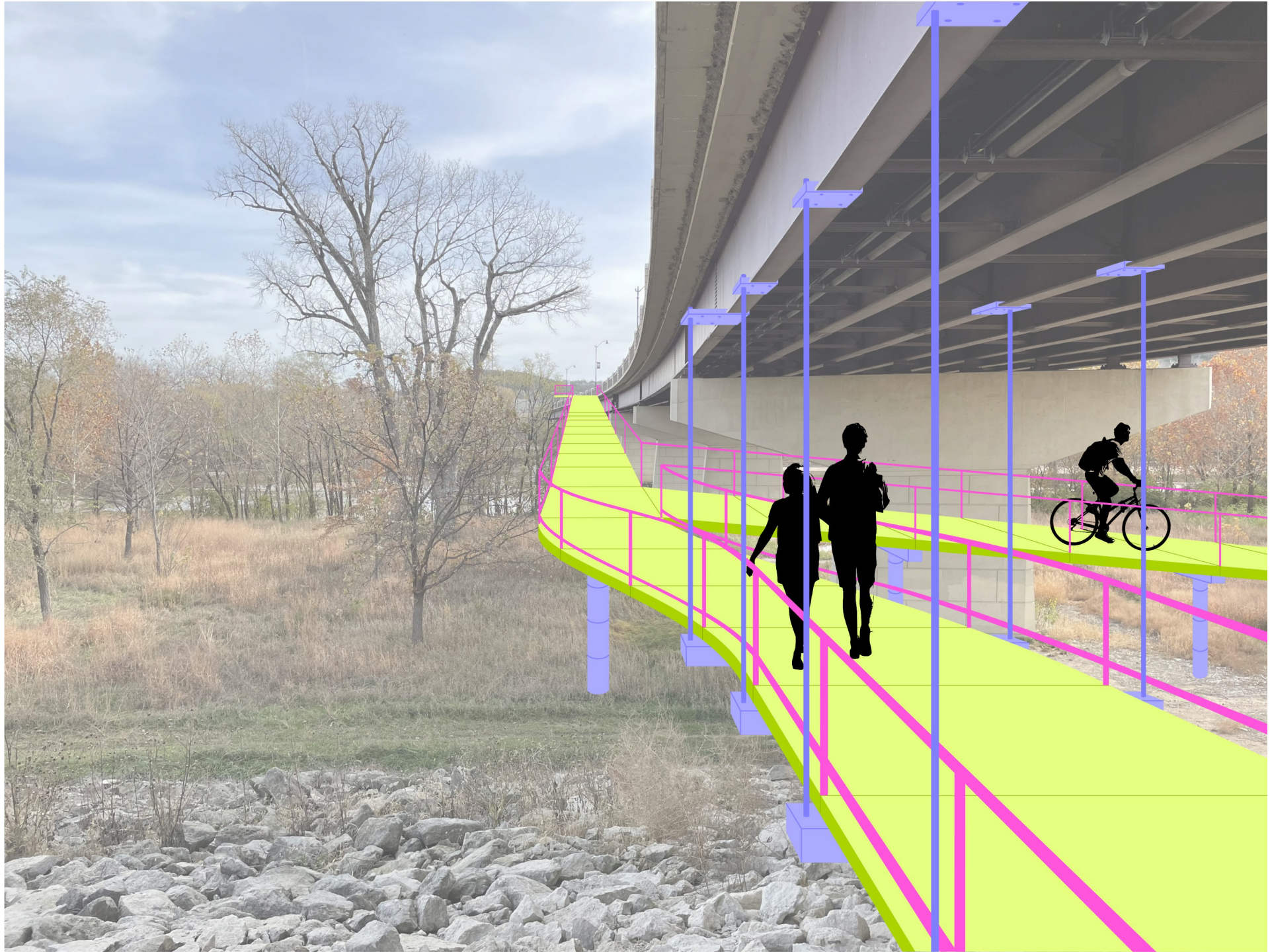
Linear Trail

Vista platform

Bridge to Park/River

K-177 Sidewalk Connection

Linear Trail connection



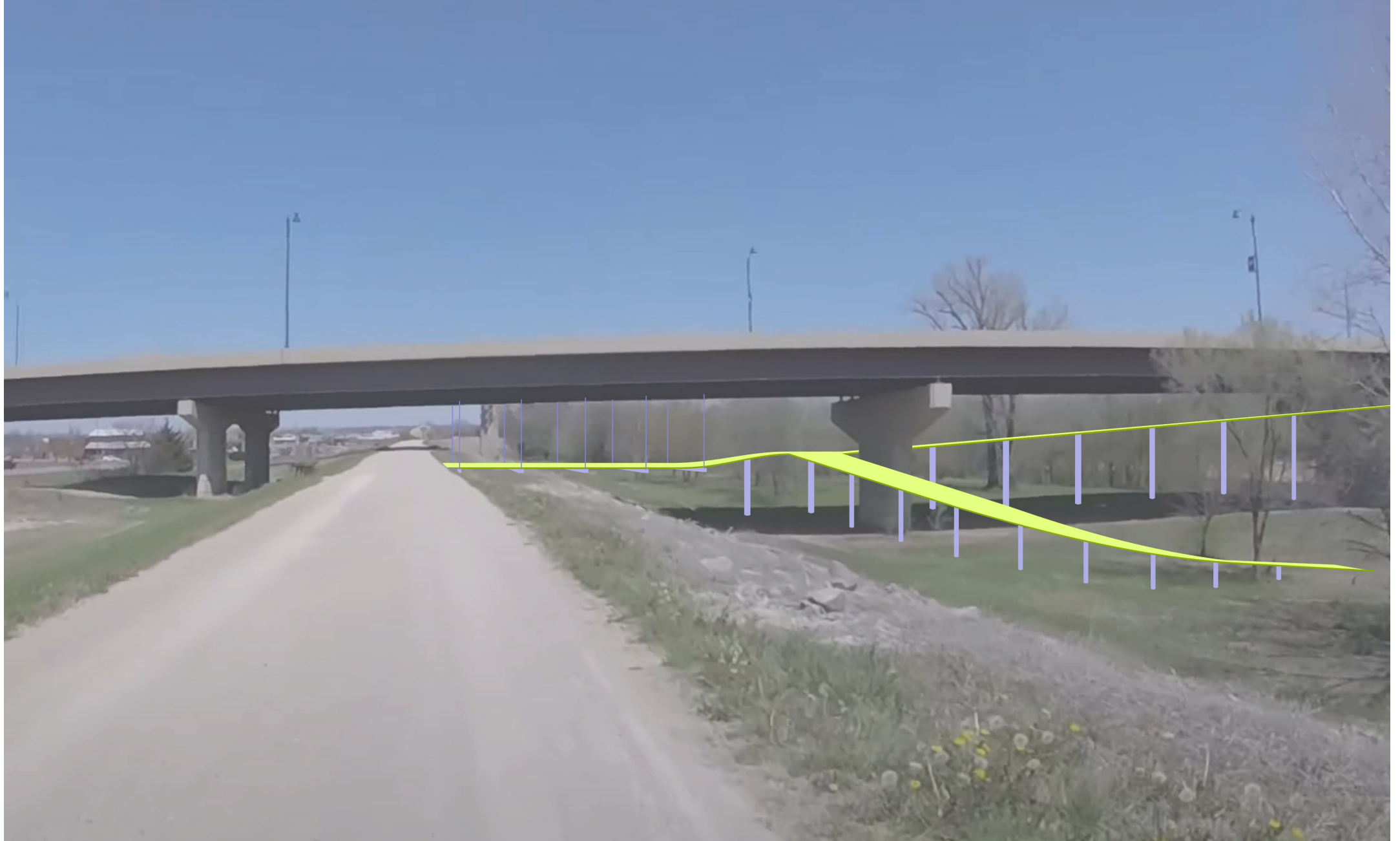
View from the Linear Trail, east along the proposed bridge connection to K-177 (Pillsbury Drive) viaduct.



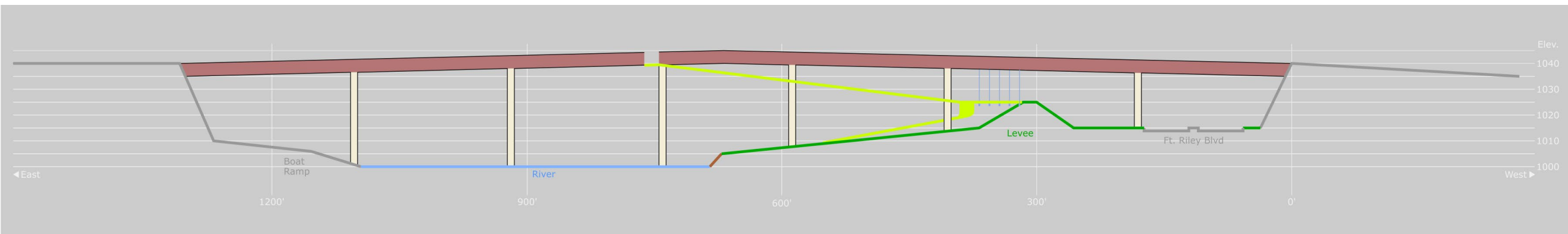
View of the Linear Trail and the junction with the K-177 bridge connector. Note, the suspended portion over the levee to remove impact the levee.



View of the proposed connection from the K-177 viaduct bridge to the scenic connection to Linear Trail. Note the potential observational viewing platform.



Simplified sketch showing the three-way connection between Linear Trail, the river front, and the K-177 viaduct (off screen to the right).



ELWHA RIVER BRIDGE

