

# ITERATIVE PROJECT DELIVERY







This document was produced by the Flint Hills Metropolitan Planning Organization. As a recipient of federal funding, the following statements are required to be included within this document.

206 Southwind Pl, Suite 2B  
Manhattan, KS 66503  
[www. FlintHillsMPO.org](http://www.FlintHillsMPO.org)

#### **TITLE VI NOTE**

The Flint Hills Metropolitan Planning Organization (MPO) hereby gives public notice that it is the policy of the agency to assure full compliance with Title VI of the Civil Rights Act of 1964, the Civil Rights Restoration Act of 1987, Executive Order 12898 on Environmental Justice, and related statutes and regulations in all programs and activities. Title VI requires that no person in the United States of America shall, on the grounds of race, color, sex, or national origin, be excluded from the participation in, be denied the benefits of, or be otherwise subjected to discrimination under any program or activity for which the MPO receives federal financial assistance. Any person who believes they have been aggrieved by an unlawful discriminatory practice under Title VI has a right to file a formal complaint with the MPO. Any such complaint must be in writing and filed with the MPO's Title VI Coordinator within one hundred and eighty (180) days following the date of the alleged discriminatory occurrence. For more information, or to obtain a Title VI Discriminatory Complaint Form, please see our website at [www.FlintHillsMPO.org](http://www.FlintHillsMPO.org).

#### **DISCLAIMER**

The preparation of this report has been financed in part through funds from the Federal Highway Administration and Federal Transit Administration, U. S. Department of Transportation, under the Metropolitan Planning Program, Section 104(f) of Title 23, U.S. Code. The contents of this report do not necessarily reflect the official views or policy of the U.S. Department of Transportation.



# Iterative Project Delivery

## Demonstration



1 day – 1 month \$

Low-cost, low durability, easy to install materials (flex posts + butyl, tempera paint)

Demonstration potential projects, get community feedback & data collection

Not permanent

## Semi-Permanent



1 month – 2 years \$\$

Relatively low-cost and durable materials (flex posts + bolts, traffic paint, rubber curb)

Improve roadway safety in a quick & inexpensive manner

On-going maintenance, not aesthetically pleasing (to some)

## Permanent



5 – 50 years \$\$\$

High-cost permanent materials (concrete, thermoplastic paint)

Permanently installed roadway improvement projects

Improved aesthetics

High cost, high maintenance

<b>Project Type</b>	<b>Planning Document</b>	Project identified & prioritized (CIP) ATPs, SRTS Plans, Bike-Ped Master Plans, etc.
---------------------	--------------------------	-----------------------------------------------------------------------------------------






<b>Project Type</b>	<b>Final Construction</b> <i>5 years - 50 years \$\$\$</i>	
Materials	High-cost permanent materials (concrete)	
Purpose	Permanently install roadway improvement projects	
Advantages	Permanent, investment in the community, aesthetics	
Disadvantages	High cost, high maintenance	

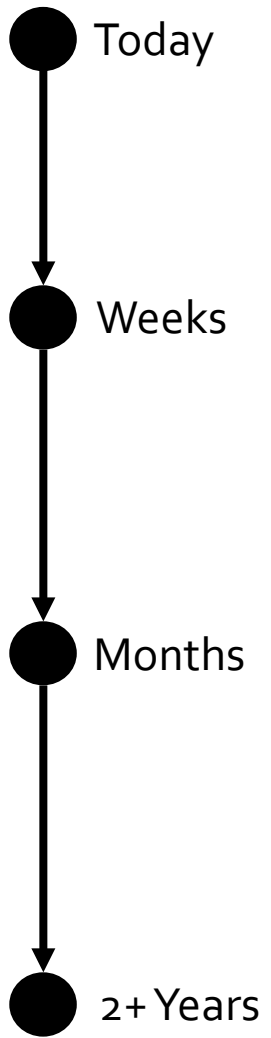
● Today

Gap!!!

● 2+ Years

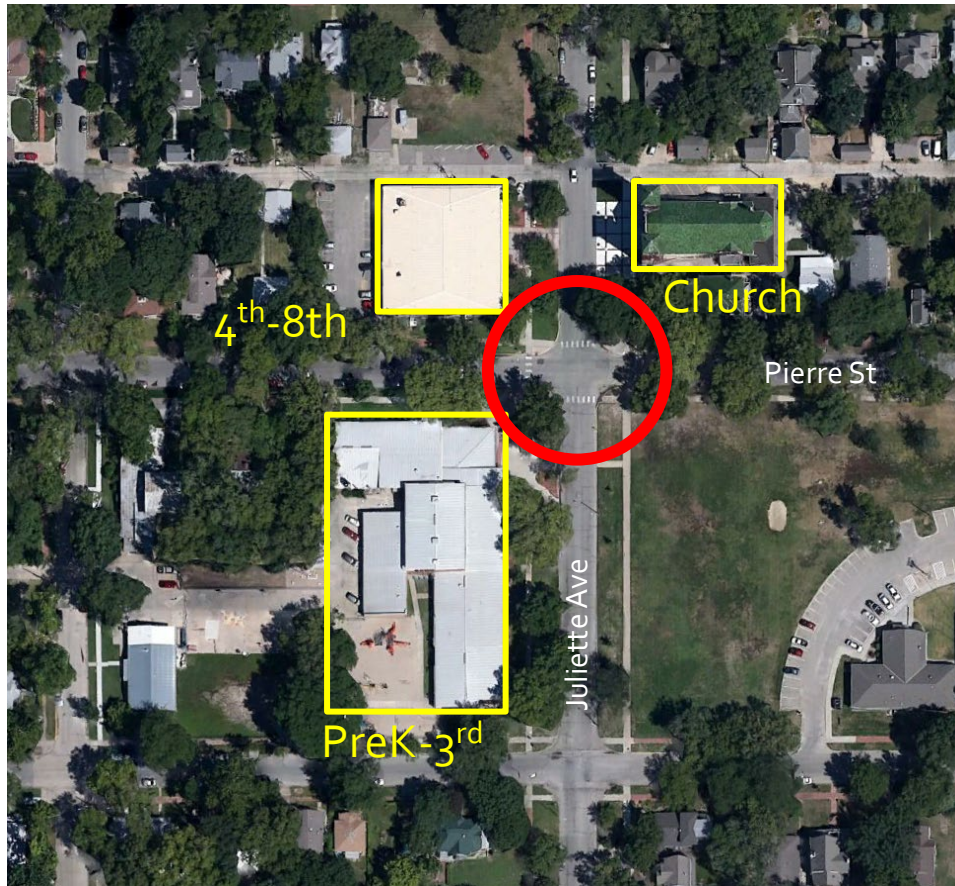


<p><b>Project Type</b></p>	<p><b>Planning Document</b></p>	<p>Project identified &amp; prioritized (CIP) ATPs, SRTS Plans, Bike-Ped Master Plans, etc.</p>
<p><b>Project Type</b></p> <p>Materials</p> <p>Purpose</p> <p>Advantages</p> <p>Disadvantages</p>	<p><b>Demonstration</b> <i>1 day - 1 month \$</i></p> <p>Low-cost, low durability, easy to install materials (cones &amp; paint)</p> <p>Demonstrate potential projects, get community feedback</p> <p>Flexible, temporary, low-cost, allows for data collection</p> <p>Not permanent</p>	
<p><b>Project Type</b></p> <p>Materials</p> <p>Purpose</p> <p>Advantages</p> <p>Disadvantages</p>	<p><b>Semi-Permanent</b> <i>1 month - 1 year \$\$</i></p> <p>Relatively low cost and semi-durable materials (delineations)</p> <p>Improve roadway safety in a quick and inexpensive manner</p> <p>Low-cost, quick installation, condensed project delivery</p> <p>On-going maintenance, not aesthetically pleasing</p>	
<p><b>Project Type</b></p> <p>Materials</p> <p>Purpose</p> <p>Advantages</p> <p>Disadvantages</p>	<p><b>Final Construction</b> <i>5 years - 50 years \$\$\$</i></p> <p>High-cost permanent materials (concrete)</p> <p>Permanently install roadway improvement projects</p> <p>Permanent, investment in the community, aesthetics</p> <p>High cost, high maintenance</p>	



Improve safety now & minimize gaps

# Juliette & Pierre Intersection



- Juliette Ave = Major Collector with 3,100 ADT
- Pierre St = Minor Collector with 3,700 ADT
- Manhattan Catholic Schools
  - 3 properties located on 3 sides of intersection
  - 6,500 student & parent intersection crossings weekly
- Intersection perceived as unsafe by parents & administration

# Opportunity for Change

The Flint Hills Metropolitan Planning Organization (FHMPO) felt the intersection was a good location to try Manhattan's first Demonstration Project for the following reasons:

- Stormwater & drainage issues would create an expensive permanent solution project
- Crash data showed 12 crashes in last 5 years; Safety concern
- Support of local school (admin, staff, & parents)
- School willing to help with limited funding & volunteers
- High profile intersection

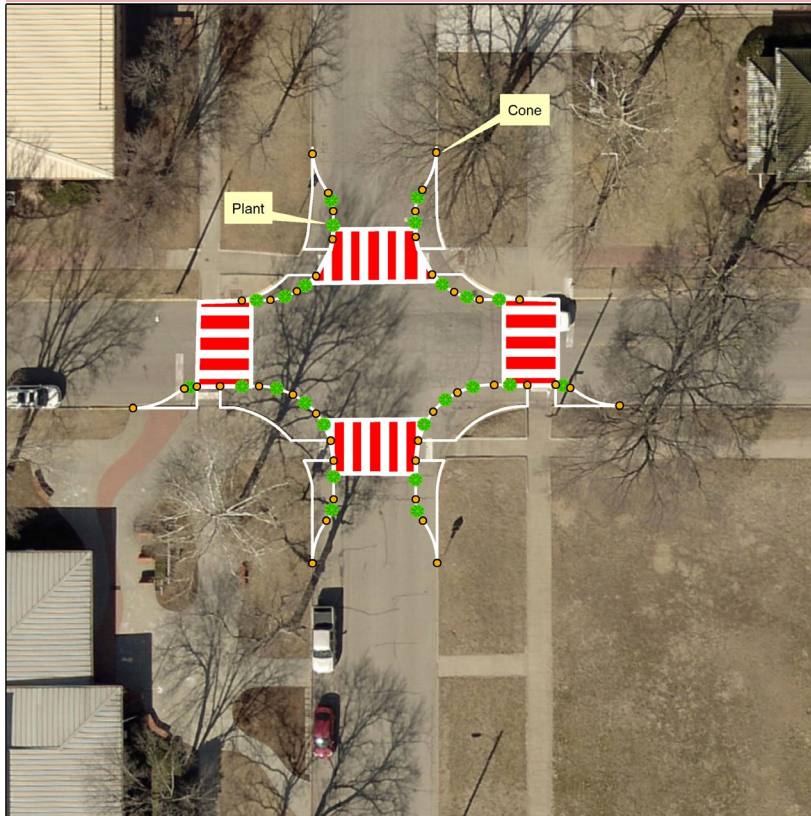
# Goals

- 1 • Reduce crossing distances
  - Juliette Ave: from existing 36ft to 24ft
  - Pierre St: from existing 30ft to 24ft
- 2 • Improve visibility of pedestrians
  - Curb extensions to day-light pedestrians to vehicle traffic
  - Parked cars created blind spots for motorists & pedestrians
- 3 • Reduce vehicle speeds

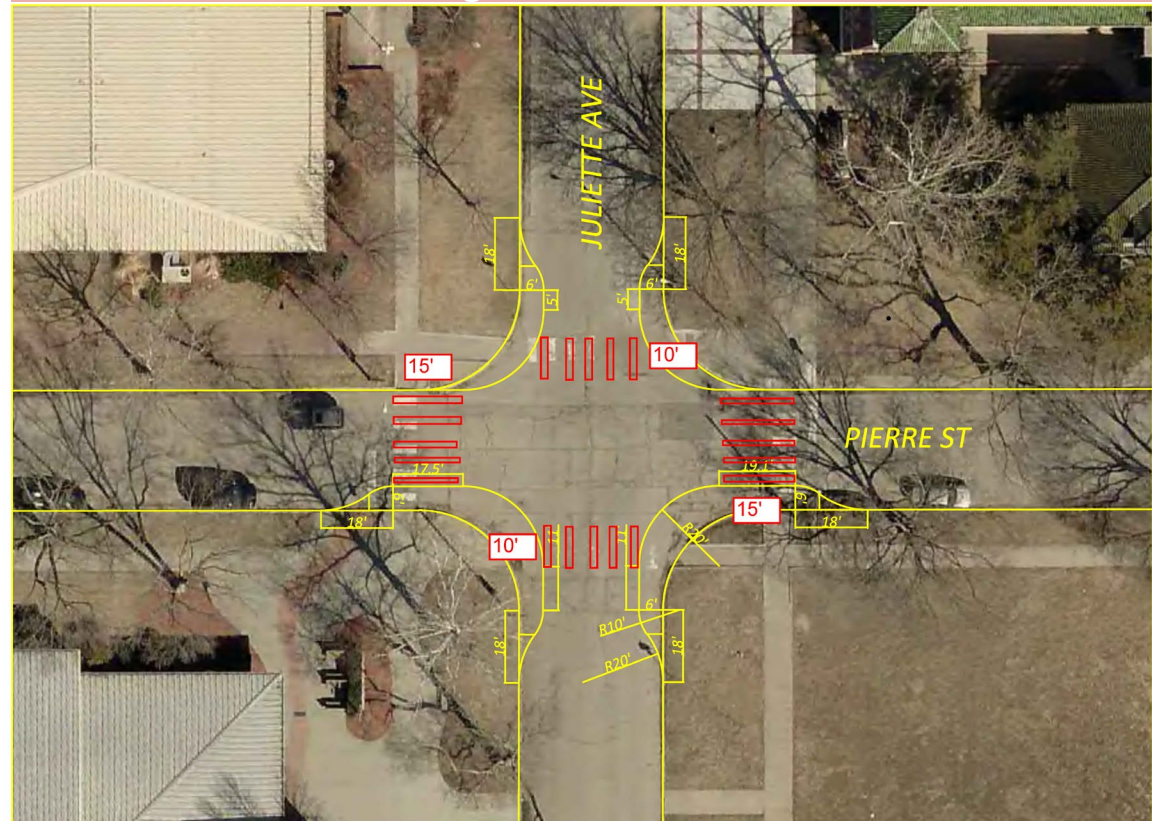


# Demonstration

Idea Sketch



Engineered Plans





# Demonstration

Before



During



Nov. 2017 – May 2018



# Semi-Permanent

Before



During



Dec. 2021 - 2024



# Permanent

Before



During



Coming - 2024



## Demonstration



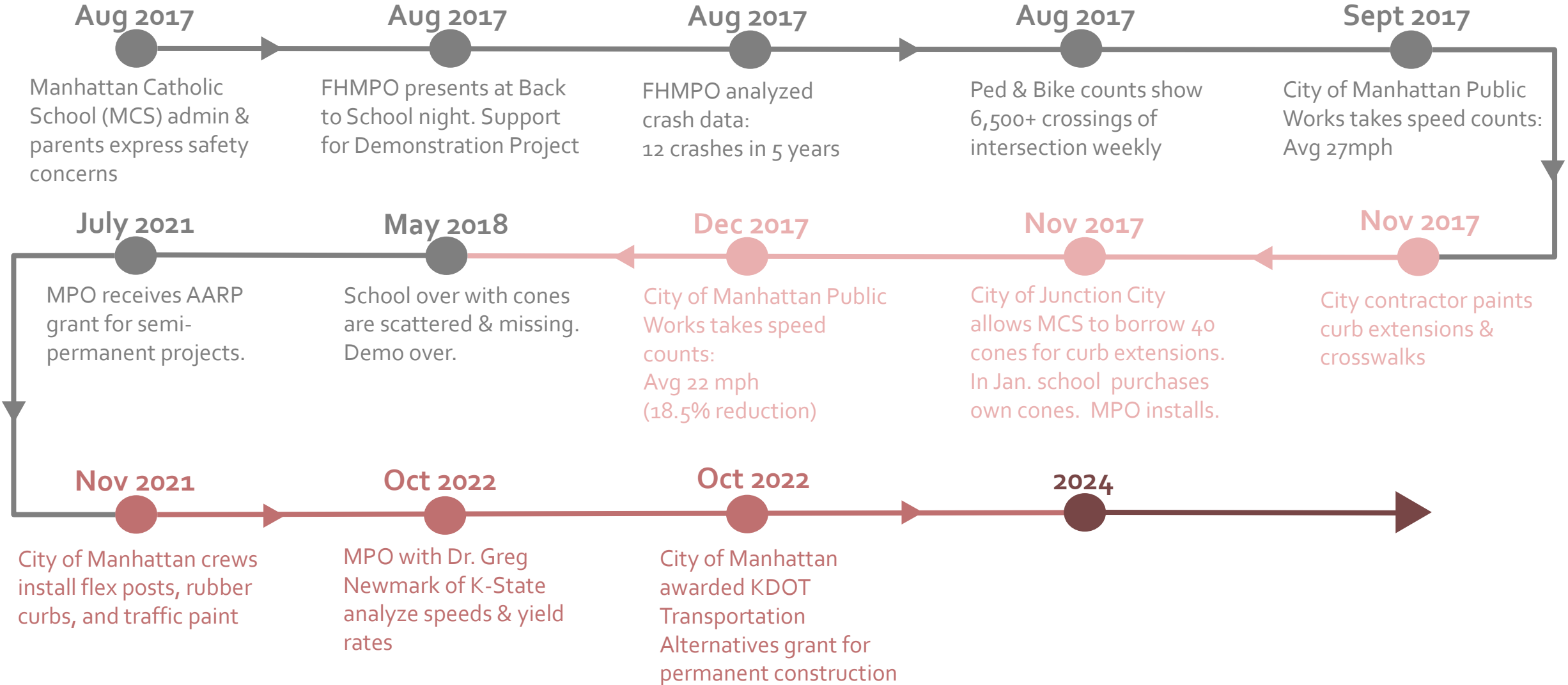
## Semi-Permanent



## Permanent



# Project Timeline





# Region-wide Cooperation

The following organizations worked together to complete the Tactical Urbanism project

